

Fast and efficient payroll management for powerful businesses



LOGO **BORDRO+**

Your business is powerful, your payroll processes are efficient

The impact of human resources on financial results becomes more evident day by day. Therefore, it is becoming more and more important to manage this resource in the best manner both in terms of legal and operational needs. The most important assistant of businesses and human resources teams in this process is the automation-based technology solutions. Focusing on meeting HR requirements efficiently with its innovative solutions, Logo delivers payroll's HR departments workload with Logo Payroll Plus. Providing complete management of employee payroll processes, Logo Payroll Plus offers high efficiency with ease-of-use, flexible structure, with time and cost savings.

LOGO **BORDRO+**

Reduce workload and increase efficiency with Logo Payroll Plus

In Human Resources processes, operations such as payroll, leave management, and debt management intensively demand time and labor. Automating these operations which create time pressure on HR teams, prevents labor wastage and minimizes mistakes in manual applications. Utilizing its long years of experience in the management of HR processes, Logo makes a difference with Logo Payroll Plus, one of the most substantial solutions of the sector, for payroll operations, which are labor and time-intensive processes. Logo Payroll Plus solution allows HR departments to perform payroll operations fast and accurately. In addition, they lower the operational costs of businesses with easy monitoring of operations.

While Logo Payroll Plus ensures the complete management of the employee payroll processes; Logo GO 3, Logo Tiger 3 and Logo Tiger 3 Enterprise provide end-to-end management of resources, working in an integrated way with enterprise resource planning (ERP) solutions.



What are the benefits of Logo Payroll Plus in HR processes?

| Speed and efficiency in payroll processes with process automation

| Easy and effective follow-up on one screen

| Time and cost savings

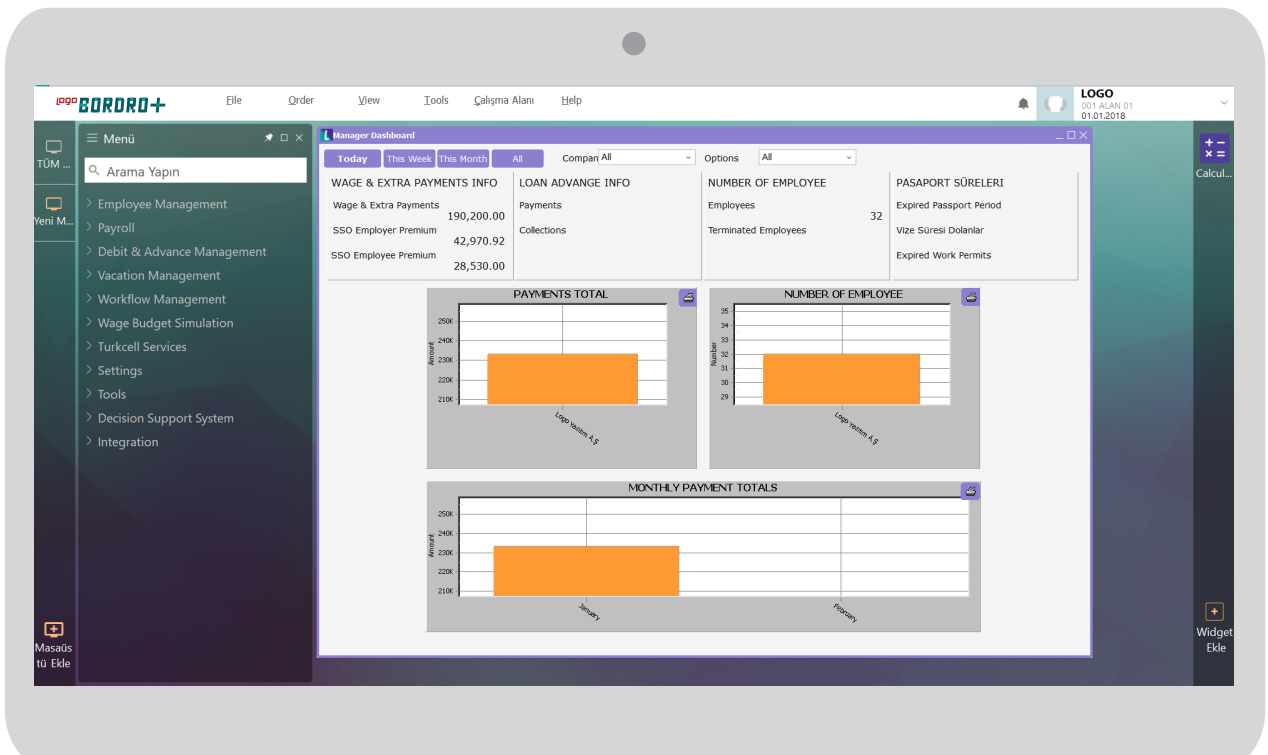
All registry information on one screen

Managing complex processes such as creating and storing documents regarding employment and termination of employment, retrospective reporting, means management of registration cards quickly and accurately is very important. Also, such procedures mean heavy workload and effort for HR teams.

With the Registry Management feature offered as standard, Logo Payroll Plus provides the ability to easily create and follow up registry cards, plus all legal documents. Registry cards created with Logo Payroll Plus can be customized with photos or signatures as well as shoe size, glove size, helmet size, and the information on the cards can be shared with the relevant authorities through e-mail. The Documentation Tracking feature of the solution provides quick access to files associated with the registry, while the Time Tracing Logs created make it possible to fully access any changes in the registry and legal information, and create relevant historical reports. Former employee follow-up and re-employment of an employee is possible using the same registry card; thus, there is no need to create a registry card again. Employee rewards or warnings and assigned assets can also be followed up easily through Logo Payroll Plus.

In addition, reassignments within the company can be easily entered into the system with the Registry Management feature of Logo Payroll Plus. Using the Batch Assignment feature of the solution, changes regarding the business-workplace-department-unit can be entered into the system as a whole, in one step.

Manage all registry processes quickly and easily!



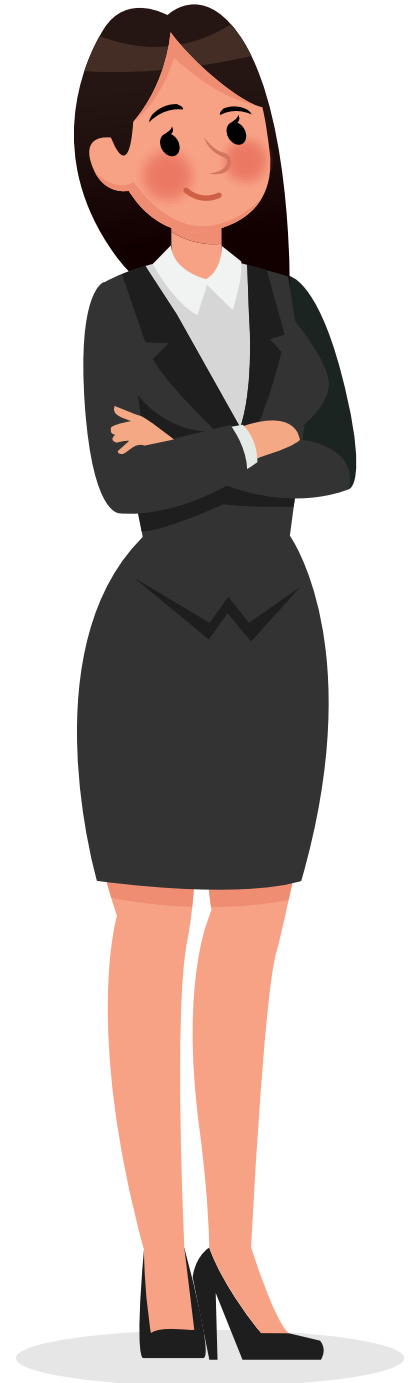
Speed up your payroll processes

Payroll procedures, which should be performed every month by businesses, are one of the biggest work items for HR departments. Automating this process, Logo Payroll Plus enables any employee information and accrual procedures required for employee payroll calculations to be accessed and performed effortlessly with Payroll Management, and calculation periods can be adjusted according to payment dates. Bringing a great advantage to company groups having more than one company, Logo Payroll Plus allows you to monitor the payroll processes of all businesses within the same group from a single source only. The prepared payrolls can be e-mailed to all employees, resulting in a significant reduction in the workload of the HR department as well as paper costs.

Logo Payroll Plus also facilitates the staff's work continuity and score card calculations. All score card information can be quickly processed and transferred to the system via the Spreadsheet Tool. With Logo Payroll Plus, allowing the use of formulas in score card calculations enables score card calculation to be made as a whole by closing the time period on a workplace basis when all or most of the employees' rights, payments, and score card values are the same. In this way, there is no need to process information of each employee separately, and HR teams save considerable time. The score card calculation can be imported from Excel into the system and included in the score card thanks to the Checker Entry option. Previously created score cards can be imported directly to the relevant employee's card with the Checker Data Transfer process. For a trade union employee, relevant union activities can be followed up and contribution fees can be automatically deducted from the payroll according to the relevant formula.

The management and follow-up of many different procedures through Logo Payroll Plus make it easier to manage salaries in foreign currency, debts/advances and reporting processes, and reports such as the bulk wage adjustment, accrual totals, cost center distribution report, severance, and notice payment can also be received in a very short time.

With the perfect integration of Logo Payroll Plus with Logo GO 3, Logo Tiger 3 and Logo Tiger 3 Enterprise ERP solutions within the portfolio of Logo, payroll and debt procedures can be automatically recognized.



Comprehensive solutions through a single system!

What are the benefits of Logo Payroll Plus in HR processes?

| Integration with ERP a solutions

| Budget simulation



Automation in workflow

Automating all of your payroll procedures with Workflow Management, Logo Payroll Plus makes your processes more traceable and manageable. This results in a significant reduction in error rates. Users of the same or different types can enter data into the system, create job requests and follow-up the results of these requests. Also, it is possible to identify your processes that are based on a particular workflow. For example, cards that require data entry for a new employee are identified in the system respectively. In this way, all process steps can be easily completed without the need to switch between cards.



Easy follow-up of debt and advances

One of the most critical stages of human resources processes that require follow-up is to ensure the smooth control of payments such as debts and advances. With Logo Payroll Plus Debt & Credit Management, employees' work advances, salary advances, and expenses can be followed up closely. Employees' debts on the company can be split into installments, and payment plans can be created through the system, deduction amounts for special debts such as alimony or debt execution can be identified and formulated on a wage basis through Logo Payroll Plus.



Easy follow-up of employee leave

With the Leave Management feature of Logo Payroll Plus, employee leave-taking can be planned and followed up accurately, and leave allowances can be calculated automatically according to the date of employment or promotion, used annual leave and missing days can be followed up, and leave allowances can also be reported with the leave report, depending on the remaining leave days.

Create, calculate and monitor advances, debt and leave information completely!

Analyze your data correctly

One of the most valuable assets of an organization is data. The Analysis and Reporting tool of Logo Payroll Plus allows the design the required reports specifically for enterprise and transforms corporate data into right decisions.

With the Report Designing Tool, the standard forms to be used for recording processes and standard reports that help make the necessary decisions by analyzing the results of these processes can be easily created without the need for any programming. With the Easy Design Tool, visual changes such as company logo, graphics, and drawings can be made in the reports. With the advanced use of formulas, additional new fields can be added to the fields in the system and reports can be submitted to another user via e-mail. The Report Generator feature allows access to all kinds of information in the product database with query statements and enable the received results in report format.

In addition, Logo Payroll Plus can perform risk analyzes to determine the risks of employee or human resources processes. In this way, it can minimize operational risks in strategic business decisions. With the Pivot Spreadsheet feature, data that requires analysis or that will affect decision processes can be freely organized.

Make the best decisions by analyzing your data correctly!



For those who want more

In addition to the features within Logo Payroll Plus, additional modules offered on-demand and according to your needs can reduce the operational workload of your enterprise. The Salary Simulation Module creates a budget simulation by calculating all employees' rates of rise (meals, bonuses, salary rates, etc.), particularly for annual and quarterly periods without any time constraints. Also, the cost reflections of changes in the number of employees in your budget can be measured in this way.



Full integration, uninterrupted business follow-up

Logo Payroll Plus solution is fully integrated with Logo Tiger HR and Logo Tiger 3 ERP solutions. With its comprehensive Logo Tiger HR integration in the HR field, business functions such as Registry Management, Payroll Processes, Debt/Advance Management, Leave Management, Workflow Management, Analysis, and Reporting can be managed practically.

Thanks to the integration with Logo Tiger 3 and Logo Tiger 3 Enterprise in ERP, data entered into Logo Payroll Plus is then consistent with all company-wide data, and payroll and debt processes can be automatically recognized through the system.

Additional features, flexible structure

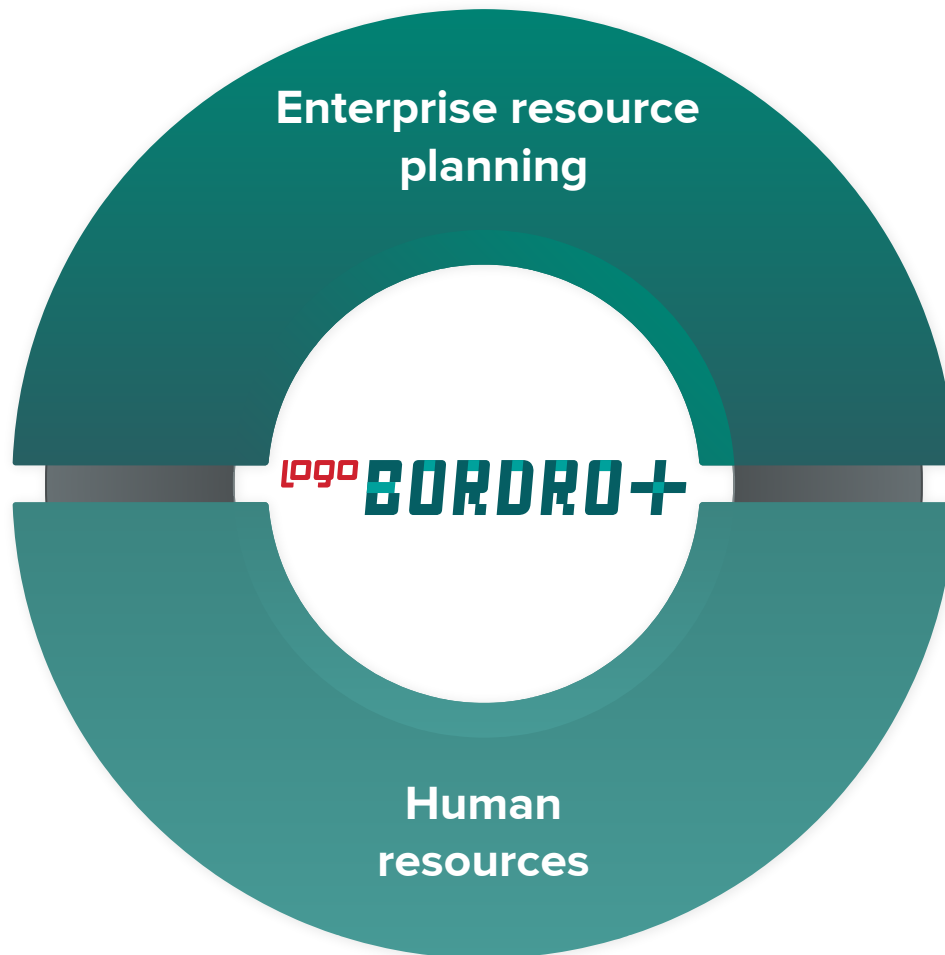
Logo Payroll Plus also provides tools such as Document Management and Task Scheduler, which save time in daily operations, reduce the burden of follow-up and control, and minimize errors.

With the feature of establishing document-record connections in Document Management, documents related to employees can be uploaded to the system and shared by e-mail. This saves time in paperwork. In addition, efforts, loss of time, and costs are reduced in document printing, copying, filing as well as archiving.

The Task Scheduler automatically starts running the tasks you put on your calendar in a timely manner and sends notifications to all relevant persons via e-mail or SMS at the beginning and completion of each task. Thanks to all these features, many routine operational processes that need to be done during the day are automated and therefore saving time and reducing effort is achieved. The amount of time and effort saved can be used in more strategic tasks.



Our integrated solutions with Logo Payroll Plus



Enterprise resource planning (ERP): Enterprise resource planning (ERP) solutions allow businesses to manage all their data and business processes end to end from a single center which leads to increase operational efficiency significantly. Logo ERP Solutions consists of an extensive portfolio, which provides traceability, effective control, and data reliability in all operations from accounting and finance management to foreign trade, procurement processes and production. By this way, In all businesses processes are automated in every business and time and cost savings are achieved with a reduced workload. Logo ERP Solutions provide businesses of all sizes with more efficient business processes, greater savings, with higher levels of performance, profit and competitive advantage.

Human resources: Agile human resources processes increase the overall service quality of the business and the efficiency of human resources teams. With the HR Solutions provided by Logo, all HR processes are digitalized and add value to businesses. Payroll Solutions also allow for the error-free and fully compliant management with legal legislation of payroll processes of employees.

For further
information about
Logo Bordro Plus



The most valuable IT brand of Turkey



Ecosystem of 5000+ people	800+ Business partners	150.000+ Active customers	1.300+ Employees
---------------------------	------------------------	---------------------------	------------------

Logo is coding the future together with its customers, business partners, employees, investors, and all stakeholders as a company contributing to the sustainable success of its customers. Logo creates value with its customers with passion and agility.

Turkey's largest public software company and the largest local enterprise software company, Logo continues its activities as one of the leading companies in the industry since its foundation in 1984. Logo offers application software solutions to enterprises ranging in size from micro to large corporations. The company, by increasing innovation and creativity in its products and services, lays the foundation for sustainable success by accompanying many companies from 44 countries on their journey of growth, with more than 1,300 employees in 4 different countries at 7 different locations and 800 business partners. Logo is a software company competing at the global level with investments in Romania and India. With Logo Total Soft, the subsidiary in Romania, the company aims to expand its footprint in the domestic market in Romania and in the European market. With its investment in India, Logo carries out product development, promotion, and marketing activities in the Indian market.

In addition to Enterprise Resource Planning, Logo's offering comprises many complementary solutions such as Customer Relationship Management, Human Resources Management, Workflow Management, Warehouse Management Systems, Business Analytics Solutions, Retail Solutions, and e-Government

solutions. It also provides digital transformation consultancy and special project management services. As the leader of the ERP systems in terms of number of customers for many years, Logo boasts a large and robust ecosystem that extends from business partners to Logo users, and from academics to students and industry professionals. Logo pursues its vision to code Turkey's future together thanks to the power it derives from this ecosystem. Logo believes in the dreams of its customers, shares the same goals, and works diligently towards achieving them.

Since its establishment, Logo has become the innovative leader of the industry thanks to its innovative products, services and business processes, and the added value it creates in digital transformation. Logo has invested in different businesses and technologies and has witnessed many breakthroughs and revenue growth in recent years due to organic and inorganic growth. The company has always adopted a fair and transparent management approach and currently has a free- float rate of 66%. Also, Logo is the first IT company to go public in Turkey and the IPO was in 2000.

After a series of strategic investments aiming at transferring the know-how and experience gained in the Turkish market to abroad, it continues the path towards becoming a regional player as one of the industry's leading companies. Logo has been pursuing its firm growth with 38% revenue CAGR (compound annual growth rate) in the last 10 years.



Logo solutions:



Offers high performance



Offer an affordable total cost of ownership



Provides an open platform



Quickly installed



Upgradeable functions in line sector-specific needs



Creates a synergy with common solutions and platforms

Find the closest business partner...



LOGO

