

Your business is under control as your enterprise grows!



LOGO NETSIS 3 STANDARD

LOGO NETSIS 3 ENTERPRISE

A new experience in ERP with Logo Netsis 3 solutions

Logo Netsis 3 ERP Solutions developed with new technologies in consideration of intuitive ease of use, combine Logo's know-how in the ERP field with its innovative vision, to take the user experience to a whole new level. Features such as the role-based customizable desktop, background images, menu tree, shortcut creation and grouping, app-in-app, and built-in search engine technologies meet the renewed aesthetic design, in line with user comments. Logo Netsis 3 ERP Solutions provide your business with end-to-end efficiency in a short period of time with the advantages of quick adaptation.

LOGO NETSIS 3 STANDARD

LOGO NETSIS 3 ENTERPRISE

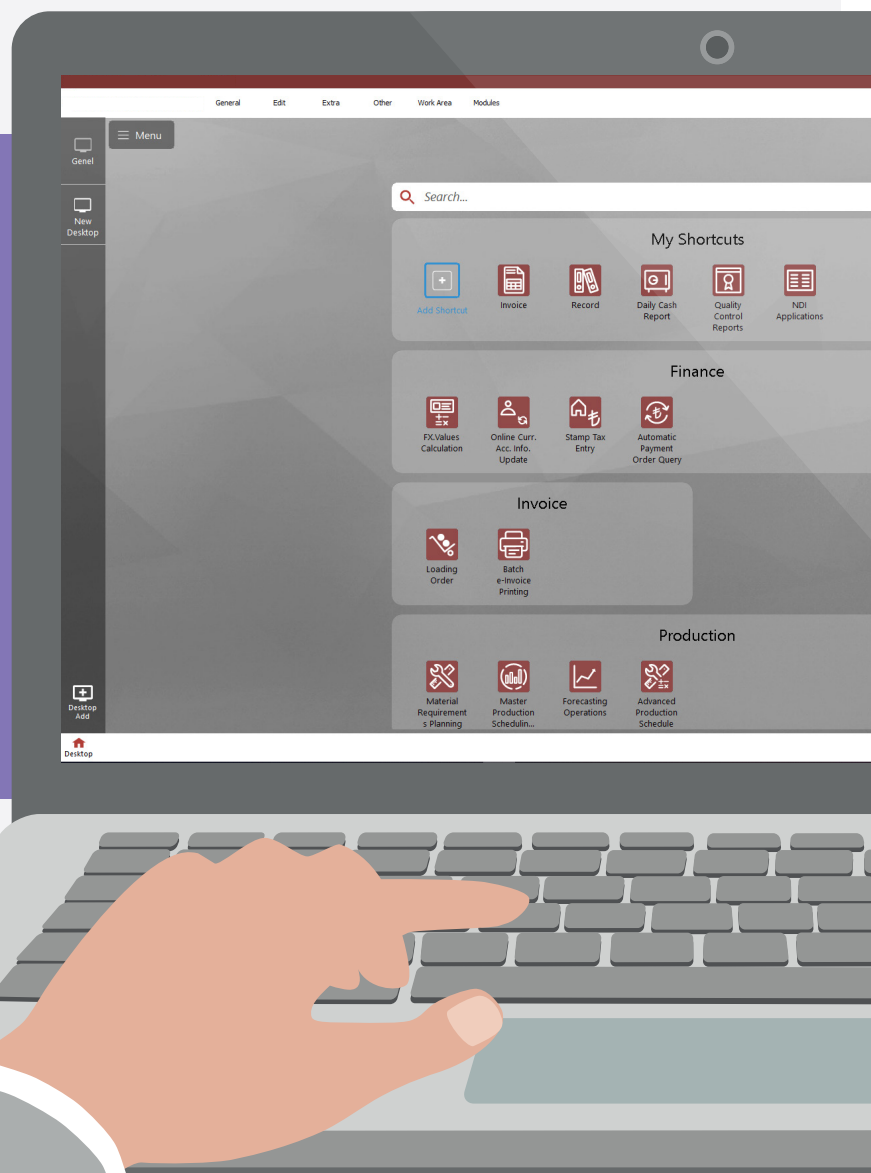
Advanced ERP solution for medium and large businesses!

Logo Netsis 3 ERP Solutions, developed to meet the enterprise resource planning (ERP) needs of medium and large businesses, offer a whole new experience in ERP with both its advanced functionality on its own plus new functions that can be added through app-in-app technology.

The Logo Netsis 3 Standard solution, which is included in the portfolio of Logo Netsis 3 ERP Solutions, was prepared especially for **medium-sized businesses** that operate in manufacturing industries and need applications such as production, warehouse management system, field sales management, sales and stock, as well as financial-accounting applications.

An enterprise ERP solution, **Logo Netsis 3 Enterprise with abundant business functions** has been developed **to provide a full solution for the needs of large-sized businesses, holdings, and industrial enterprises** carrying out complex production and detailed planning processes.

Regardless of the size of your business, ***you are always one step ahead of the competition*** with Logo Netsis 3 ERP Solutions increasing the efficiency of your business by providing error-free and efficient management of processes!



One solution for all your needs

Allowing you to manage your business processes practically and effectively with much lower costs, Logo Netsis 3 ERP Solutions spread the idea of quality and efficiency throughout the business, starting with employees. Our solutions allow you to exchange information between departments, organize complex business processes, and manage customer relationships effectively. When there is an information entry created into the system, all departments are able to directly access current information within their authority. Simultaneous communication between users saves time and lowers the level of unnecessary communication.

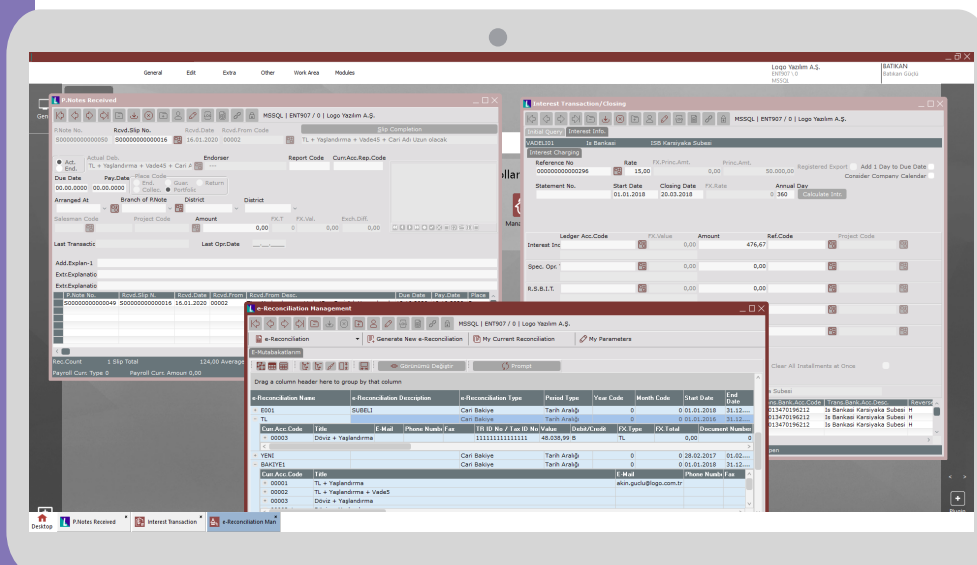
In addition to the standard modules designed in line with all your needs, specific solutions for your business can be optionally added to Logo Netsis 3 ERP Solutions. Thus, the most suitable ERP package for the specific needs of your business becomes ready for to use.



Interpret your financial data correctly

You can build reliable infrastructure for your strategic business decisions and improve your financial performance thanks to Logo Netsis 3 ERP Solutions, which allows you to access correct information instantly with business critical financial functions. Logo Netsis 3 ERP Solutions provide the basis for financial performance that provides an advantage not only in the local market competition, but also in the international operations within the globalizing economy. With its flexible exchange system and reporting structure, it provides the opportunity to follow international activities and access up-to-date profitability analyses.

The definitions of payment and collection planned in Logo Netsis 3 ERP Solutions offer flexibility to meet all kinds of needs. Within your set limits and rules, risk monitoring, Ba- Bs, balance and extract reconciliations can be completed and sent electronically. With the **bank module**, loans (rotary, spot, etc.), and accounts such as time/demand deposits, repo, collateral accounts (letter of guarantee, letter of credit) are easily monitored. Central Bank codes and international swift codes are monitored and transactions are performed automatically within the module. The accuracy of bank transactions can be checked from the system; received interest and commission calculations can be made through the banking transaction options. Workload is reduced by automatically reflecting payment orders or invoice instructions in the records, through the online banking infrastructure. Credit card collections and banking terms of contracts are entered into the system so payments and deductions are kept under control.



Full control over your commercial activities

Allowing you to scale and report your account plan according to your business and the way you work, Logo Netsis 3 ERP Solutions allow you to take full control of your commercial activities. The chart of accounts are simplified by use of the branch, reference code, and project code dimensions in the records, and accounting receipts are not required to be entered thanks to the integrated structure of the finance management. As accounting records in the other processes are created automatically, it is sufficient to just audit them. Thanks to the parametric infrastructure of Logo Netsis 3 ERP Solutions, documents can be transferred directly to accounting, or acknowledged after being checked into the integration pool.

Offering flexibility and efficiency in cost management, Logo Netsis 3 ERP Solutions can report the costs of products sold and in stock with different methods, and also can use the monthly weighted average or FIFO methods in the periodic costing of goods issued. Businesses that engage in production can calculate product costs not only from the cost of consumed material, but also by adding the production and operating costs related to production. The deduction of the cost of goods sold is determined automatically with calculated costs, the profitability for the period and the remaining stock value can be reported with the same costs. In this way, businesses can control costs and take the necessary measures for this purpose to increase profitability.

If you have a business operating on a project basis, all the expenses and costs from the beginning of the project to the end, every kind of process such as promissory note/check transactions of a project, and production processes can easily be followed-up with the Project application in Logo Netsis 3 ERP Solutions. Since the project code is queried in every record entered in the program, reports such as detailed reports, cumulative reports and project trial balances can be received.

Monitor the value of fixed assets

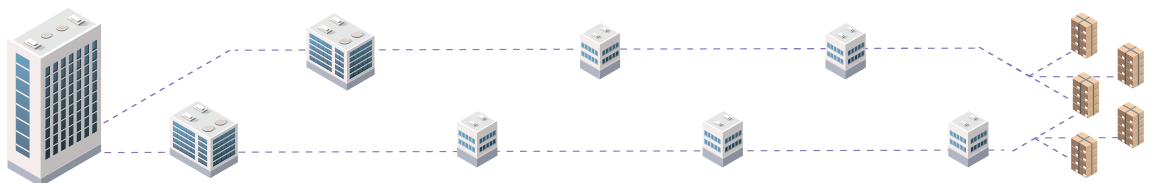
In addition to your regulatory requirements, you can follow up on your processes such as purchasing transactions, debit and disposal of fixed assets through the fixed asset management module in Logo Netsis 3 ERP Solutions. Thanks to multiple amortization schedules in this module, amortization can be calculated in local currency according to the Tax Procedure Law, in reporting currency according to international reporting, and in local currency according to the Turkish Financial Reporting Standards (TFRS). In addition, different depreciation accounts can be transferred to accounting through separate accounts.

Central management of company groups

If your business includes more than one company, different units may be needed for organizational management. Thanks to Logo Netsis 3 Enterprise Solution's compatible structure with corporate groups, a common coding system can be used in every unit, from the holding to the branch, or a specific coding system can be applied to each branch, or the enterprise itself. Many operations such as orders and expenses, can be performed on behalf of head office branches or the holding.

Also, group-level profitability can be calculated, inventory can be viewed as a whole, and cashflow can be analyzed for every company.

Thanks to the consolidated statements feature of Logo Netsis 3 Enterprise Solutions the assets, liabilities, equities, income and expenses of each company in the group can be combined. Thus, the assets, liabilities, income and expenses and non-cash liabilities of multiple enterprises are presented as they belong to a single partnership, and account owners, investors, audit authorities and other relevant parties can be informed about their financial situation and operational results.





A more reliable foreign trade structure

The foreign trade module of Logo Netsis 3 ERP Solutions enables import and export operations to be performed more effectively, more efficiently and in compliance with legal obligations. All liabilities can be monitored due to compatibility and integration with other processes such as accounting, finance, purchasing, sales and distribution.



Efficient production, low cost

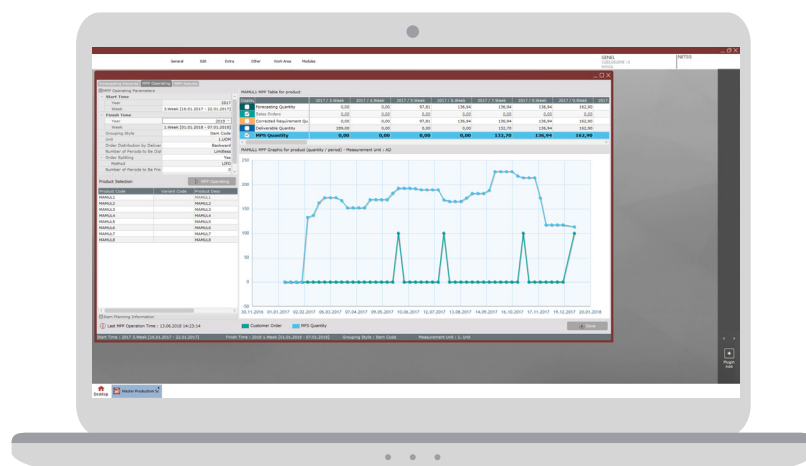
Transactions and processes such as controlling complex production processes, compliance with varying customer order deadlines, completion of the supply chain, and the management of stocks based on requirements are the scenarios that manufacturing enterprises need the most and should be designed in advance. For the effective management of the entire process, from a to z, complex systems must be brought together. Logo Netsis 3 ERP Solutions reduce production costs by optimizing the production processes from the very beginning to the end. Resources are effectively managed through functions such as forecasting, master production scheduling, capacity planning, material requirement planning, production flow control, advanced production planning (scheduling), quality control, and machine maintenance and repair.



Forecasting and Master Production Scheduling (MPS)

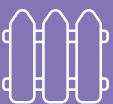
The forecasting function in Logo Netsis 3 ERP Solutions receives sales data from previous years and makes sales forecasts for future periods with 11 different integrated statistical estimation methods. All these forecasts can be made based on SKU or product families.

The Master Production Scheduling (MPS) function in Logo Netsis 3 ERP Solutions balances sales forecasts, stock balance, lot size, minimum - maximum stock levels and current orders to determine periodical production. It also calculates ATP (Available to Promise) quantities to ensure that customers are given deadlines in line with the master production schedule.



Material Requirements Planning (MRP)

Material Requirements Planning ensures that work orders of semi-finished and finished products produced are opened in the right quantities and at the right time depending on capacity limits, while providing the necessary materials for the products planned to be produced in an optimum amount, and on time. Supplier orders, work orders of semi-finished/finished products and subcontracting orders can be created by taking into account the stock balances and reservations, balances from purchase orders and work orders as well as the numerous parameters such as supplier quota, lot size, lead time, supplier capacity, prioritization and subcontracting. Using purchase requests/orders, work orders are created automatically via an order basis or cumulatively. In addition, the previous purchase requests/orders and work orders that are currently in the system can be updated or closed with the visual balancing tool.



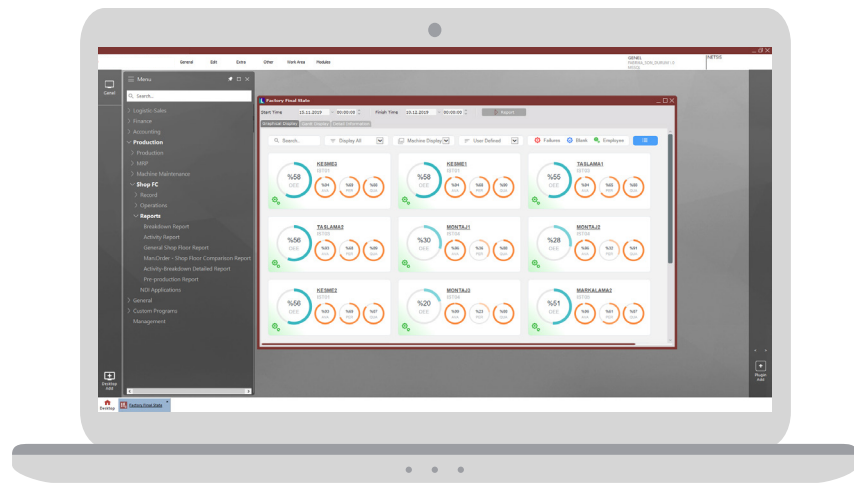


Resource management

With the resource management application, the resources used in the production such as molds, knives and saws are identified, and the usage of resources is entered into the system accordingly during the recording of production. In this way, it is possible to monitor the lifetime of the resource and determine resource activities in the past. In the advanced production planning application, the lifetime information of the resource is taken into consideration and the schedule is finalized accordingly. A maintenance plan can be drawn up not only for the resources in operation, but also for repairable resources according to the schedule result. Thus, production costs reduce and efficiency increases.

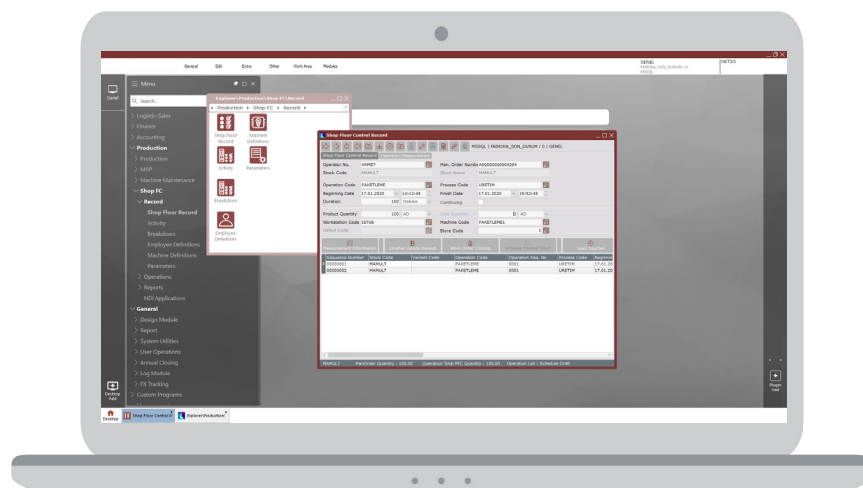
Capacity planning

The capacity planning function in Logo Netsis 3 ERP Solutions defines your production capacity based on workstations, work schedule and the number of machinery available at the stations. The capacity requirement occurring as a result of time periods such as operations, preparations, and transfers that are determined on product routes for the manufactured product quantities, constitutes an important input to the material requirements plan. It is possible to create capacity utilization reports, predict bottlenecks easily in cases where capacity is not sufficient, and try distinct scenarios to take relevant measures. It is also possible to measure efficiency with the Overall Equipment Effectiveness (OEE) provided with this function.



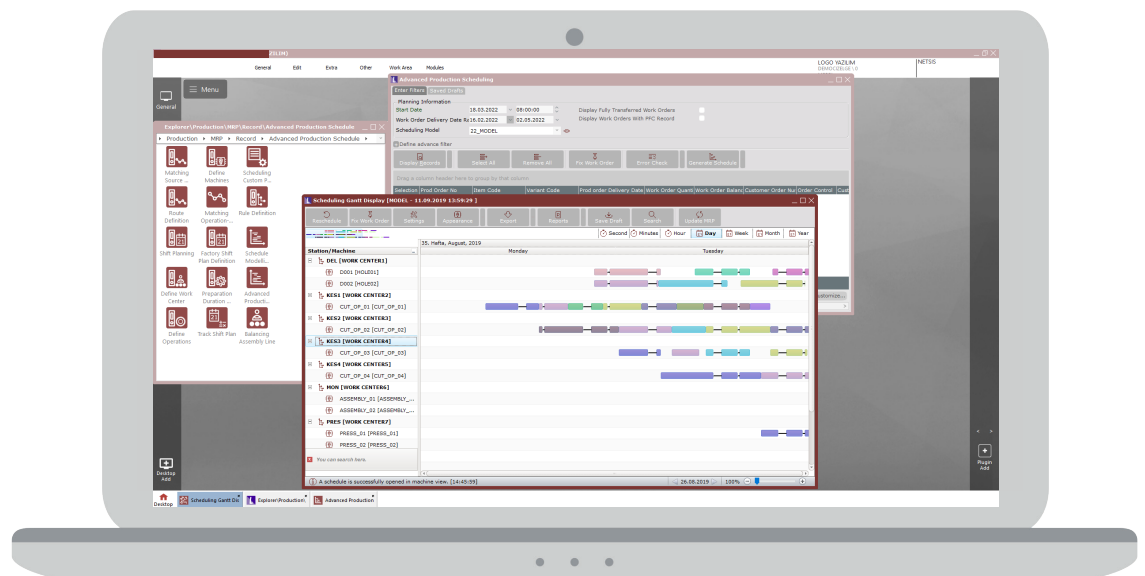
Production flow control

The production flow control function helps you to be informed instantly of all the work, down times and malfunctions that has occurred in the factory. The system that can integrate with the visual factory applications and mobile automation systems with a barcode reader or RFID, allows you to manage your production records in real-time and create a complete auto-control mechanism with the most up-to-date and accurate information. In this way, planning processes can be carried out with up-to-date and accurate data. In addition, it is possible to achieve accurate production lead times and allocation keys by obtaining various efficiency analyses from this data.



Advanced production planning (scheduling)

The advanced production planning (scheduling) module defines the product routes specifying operational codes and orders for highly flexible products or product groups and identifies alternative routes. While the rules, such as production lead times and quantities based on the operation-machine and the necessity and use dependence based on the operation-resource and machine-source are identified for products or product groups, the preparation times for product-operation-source transitions can be easily identified. The scheduling module takes the workstations into one unit within itself according to the common machine types, optimizes tasks that need to be done for each workstation for the scheduling period, and puts them in order, then generates the inputs of the next station. As a result of the optimization, a Gantt chart is prepared, and tasks can be arranged by dragging and dropping according to the user or the business. It is also possible to maintain certain tasks as fixed and reschedule the others. Being able to easily receive tasks to be scheduled through Excel, easily submit scheduling results to Excel, and algorithms including industry-specific optimizations such as the injection processes and assembly line balancing, in addition to the industry-independent scheduling algorithm are among the prominent features of the advanced production planning module.



Quality control

With the quality control function in Logo Netsis 3 ERP Solutions, measurements on the basis of material, semi-finished and finished products, rejection and acceptance criteria limits, and the amount of measurement samples can be identified. Sample records for quality control can be created automatically. When any measurement values are entered, the system automatically decides whether to accept or reject the lot, and processes such as transferring the lot to the stockroom or returning it to the seller are performed automatically after the acceptance/rejection. It is possible to view the rejection/acceptance data through the system, as well as the reasons. Quality measurements can be made based on the documented product/raw material, and it can also be seen in statistical control graphs whether the process is under control in regards to the measurements of temperature, humidity, noise and vibration at the stations, machinery, resource or entire factory, and the measurement records entered, and it is possible to automatically enter preventive maintenance records into the system whenever a problem is detected.



Effective control with cost accounting module

The cost accounting module of Logo Netsis 3 ERP Solutions offers all the necessary data to identify a strategy, to become a leader with new strategies and to increase profitability in a competitive environment. The effect of the costs required for a single unit of your product, such as workmanship, material, energy, depreciation, or semi-finished goods can be easily found in the system and the cost of the sold product can be quickly viewed. This significantly increases production efficiency.

The production processes are defined in the finest detail through Logo Netsis 3 ERP Solutions, so that the system can evaluate the data. The production stages and expense centers that are processed in each of these stages; which distribution keys will be used to evaluate the items of raw material, labor and depreciation will be evaluated; the order of the stages; products or product groups and the account codes for the finished goods, semi-finished goods, consumables and reflection of these groups are all entered into the relevant sections. In addition, subcontracting costs are also reflected in the costs, depending on the work order. If the business has multiple branches, the processes can be monitored from a single-center thanks to the branched cost accounting structure of Logo Netsis 3 ERP Solutions that allows cost analysis to be performed in different factories according to the same product code.



Error-free and automated purchasing processes

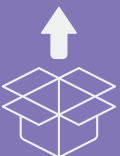
Error-free delivery of orders to suppliers prevents many problems from arising. With Logo Netsis 3 ERP Solutions, it is possible to track all transactions, from orders to purchase invoices in a connected manner, to keep the entire process under control and automate many transactions. In addition to identifying the most appropriate offer by collecting offers from suppliers, details such as discounts and forward prices in supplier contracts who are regularly worked with can be defined in the system based on dates, and purchase records can be easily created. Planning processes are facilitated with the definition of lead time and other similar definitions.



Improve your stock operation quality

Logo Netsis 3 ERP Solutions allow you to create and monitor your stock, targets and strategies, monitor your real-time stock values and levels, and control your inventory costs. Products can be easily tracked thanks to material classification and leveled hierarchy designed for businesses working with various product ranges. The same type of materials can be monitored based on different criteria, and a change that concerns thousands of materials can be updated by changing only a single definition within the flexible configuration (variant). While materials can be tracked with an unlimited number of units, thanks to the monitoring feature with different units, reporting processes can be performed through a single unit with the conversion coefficients feature.

The dynamic warehouse module developed for the stock operations allows goods to be placed easily in the warehouse with the help of defined parameters and easily collected during issuance. As it becomes easy to follow all the movements of raw materials and products in the warehouse, purchasing, placement, collection and dispatch operations can be smoothly managed. In addition to shaping the warehouse rules with the help of parameters, matching goods with shelves based on their volume, and tracking the stock entries/exits and production activities through serial numbers with the serial/lot tracking application becomes possible. The audit reports provided with Logo Netsis 3 ERP Solutions can also indicate the real-time warehouse-stock mismatch. In the event that multiple products are gathered and sold as a single product, the mixed parcel feature is offered for the issuance and follow-up of products in the parcel.



Reasonable pricing, timely delivery

Shipment processes are as critical to customer satisfaction as production processes. The process, beginning with the creation of all the paperwork required for the orders and delivery, and lasting until the completion of a timely delivery can be managed in an integrated manner with Logo Netsis 3 ERP. Information in relation to stocks, requests, offers, orders, delivery notes, invoices and customer debts are easily followed-up through the system, while the issuance of invoices in foreign currencies for international operations and follow-up of payments in foreign currencies also facilitate processes. The quality of service offered to customers increases as operations are properly managed and in a timely manner with an efficient sales and distribution process, ensuring that the improvement in customer satisfaction is reflected in your company as a competitive advantage.

The useful features of Logo Netsis 3 ERP Solutions start at the quotation process which is the first stage of a sale. In order to ensure that all users act on the same definitions, to reduce any error margins and to make the process more practical, necessary definitions are made in the system. Thanks to these definitions; price, discount, maturity, and other information are displayed automatically during the quotation process. In addition, all quotations, before the ordering process, can be monitored throughout the system. Orders can be received via phone or e-mail, or your customers can enter order requests and receive quotation online through the B2B (Business to Business electronic commerce) application.

With the sales representative follow-up application, accounts can be created for whomever necessary such as the salesperson, customer representative, or a sales representative can be introduced based on a current account or selected when entering transactions. Also, sales representatives can be grouped within themselves in terms of reporting.



Cutting-edge technology

While fulfilling its promise to meet the enterprise resource planning business needs thoroughly, Logo Netsis 3 ERP Solutions also meet the requirements arising from the differences specific to companies or industries with its flexible structure. These solutions designed in an upgradeable structure, increase efficiency within business processes without sacrificing security or flexibility.



Customizations and integrations according to your needs

If you have different expectations or specific needs for your business, you can develop applications customized for your company and integrate them into Logo Netsis 3 ERP Solutions. For example, with the Netsis 3 Enterprise **dynamic coding support**, you can open a new form on the available screens according to the rules set during the document entry, display a pop-up message or block the process, as well as add new data entry screens, special business logics, and reports into ERP with NDI (Netsis Data Inspector) application.

If you are developing your own applications or want to integrate Logo Netsis 3 ERP Solutions with different applications, you can utilize **NetOpenX**. With NetOpenX, you can import records to Logo Netsis 3 ERP Solutions and receive data without breaking the business logic.

The Netsis REST **API** is an interface which covers the NetOpenX functions, and offers standardization, convenience and consistency for the development of web-based or mobile applications. This feature is supported by the REST (Representational State Transfer) Web API infrastructure which is a simple, flexible and capable architecture, and is able to broadcast via the Windows service without an IIS installation.

Your data is always secure

Data security is just as important as the storing or processing of it. The NLS infrastructure of Logo Netsis 3 ERP Solutions can keep logs even if any cyber attack occurs against company data. Changes can be monitored with the optimized methods without affecting program performance.

The **Netsis Single Sign-On** system (SSO) allows you to create only one user name/password for all users who will access Logo Netsis 3 ERP applications and enables access to all applications with this user name/password both on Windows and Web. In businesses using active directory, users can access Logo Netsis 3 ERP applications with their accounts in the domain. In this way, the security policies to be provided by the active directory can be utilized directly, and users can also connect to Logo Netsis 3 ERP applications through an open Windows session without entering the user name/password.

Column based security is activated when the users try to enter a record that violates a restriction imposed for a field, so the program does not allow this entry and warns the user. Form based security can be used when the users should not view certain fields or when there are unnecessary fields on available screens. In addition to this, some restrictions can be applied to users by using Line-Based Security to prevent the complete record from being viewable, instead of some fields.

Widgets and apps for those who want more

The widgets and apps that are provided to meet all the expectations of businesses using Logo Netsis 3 ERP Solutions continue to support Logo's concept of "upgradeable products". For example, the required information can be quickly obtained with widgets that allow you to view the most frequently used processes on the right bar, you can easily add widgets and apps that are ready-to-use or available at the Logo Store and developed by Logo and its solution partners in line with your needs and expectations, to your desktop and access them with one single click.

Virtual keyboard support

With the virtual keyboard feature of Logo Netsis 3 ERP Solutions, all operations can also be easily performed on touch screen laptops.



User-friendly design

The determining factor in the interface designs is the user experience. The more comfortable the interfaces that connect the technology with the users are, the better the user experience and the adoption rate of solutions used. This is the basis of the new interfaces developed for Logo Netsis 3 ERP Solutions.



Supporting you from your first step

Logo is with you from the first moment you started using Logo Netsis 3 ERP Solutions! With the first installation, we welcome you with a tour that tells you what features you can access, which functions you can use and how to use them. Clear, simple and effective, these guides are at your service not only for the solutions but also for apps and other add-ins.



Your desktop is just the way you want it

The main screen can now be split into frequently used functions thanks to the “add new desktop” feature on the left bar and you can add new functions at any time easily. The functions added to the desktop can be grouped as a folder by dragging and dropping; thus, the interrelated functions are kept together to make the desktop more organized. Providing ease of use, saving time and ensuring productivity, this system appeals to your eyes with its aesthetic design, while increasing your work productivity.

Allowing you to customize the shortcut keys to speed up your processes, Logo Tiger 3 ERP Solutions allow you to make changes to the shortcut commands created. In short, all the features you need on your desktop are brought together in Logo Netsis 3 ERP Solutions.



Aesthetic and practical design

In the new interface of Logo Netsis 3 ERP Solutions; background colors, page contrast, icon colors, and sizes are rearranged to create a more aesthetic and easy-to-read design. The background can be easily changed at any time, and the font color changes automatically to the selected background. This ensures optimal visual comfort on every background.



Stop getting lost among windows

The biggest challenge for users who have to constantly switch between multiple windows is the ability to quickly recognize the right window and open the right page. For this reason, in Logo Netsis 3 ERP Solutions, all open windows are presented at the bottom of the screen with icons that can be easily followed.





The access tree is again on the homepage

With the access tree feature of Logo Netsis 3 ERP Solutions, users can see all the functions from a single source and any function can be added to the desktop as a shortcut with a single click. Also, when the mega menu in the access tree is used in the full screen mode, all menus and sub-menus in the solution can be viewed on one screen.



The easiest way to find something is: search!

Although you can easily access the desired functions through the access tree, it is now easy to find what you are looking for in Logo Netsis 3 ERP Solutions as the “search” button is more visible on the desktop.



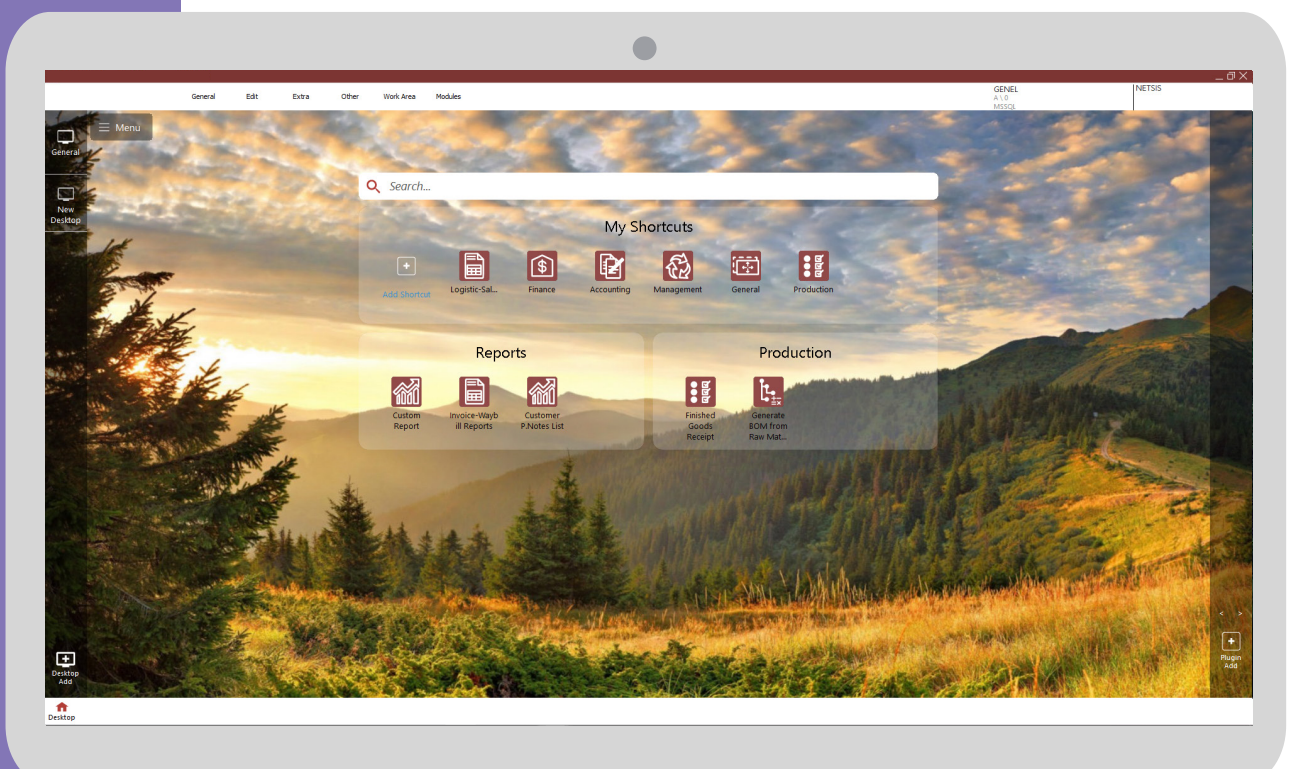
Module-independent forms

You can open the screens of different modules simultaneously and perform the relevant tasks. In this way, required information is obtained without closing the screen, regardless of the module.



Direct access to external links

While using your Logo Netsis 3 ERP product, you do not need to log out of the system when you need a table, document, application, folder, or website from a different source. In addition to frequently used Windows programs such as Excel, Word, PowerPoint, the shortcut of any external link can be added to the desktop and all applications can be accessed quickly from within the program.





Our integrated solutions with Logo Netsis 3 Enterprise and Logo Netsis 3 Standard

Business analytics: Businesses are in need of transforming huge amounts of data that does not make sense on its own into significant information and therefore, value. Logo business analytics solutions process data from tens of different sources quickly and meticulously, and provides real-time information and reports to decision-making mechanisms. With the budget management solution, budget processes are managed faster, more flexibly and securely. Logo Business Analytics Solutions help you to stand out against the competition.

Human resources: Agile human resources processes increase the overall service quality of the business and the efficiency of human resources teams. With the HR Solutions provided by Logo, all HR processes are digitalized and add value to businesses. Payroll Solutions also allow for the error-free and fully compliant management with legal legislation of payroll processes of employees.

Logo approved ecosystem solutions: Logo-approved ecosystem solutions,” which can be fully integrated with Logo ERP solutions and developed by Logo’s solution development partners, offer solutions for the special needs of users. These solutions are Solutions licensed by Logo and sold through Logo price lists.

Data backup, cafe and restaurant management, data transfer between companies, warehouse processes management, technical service, e-commerce and marketplace integration within the scope of Logo-approved ecosystem solutions that diversify according to the specific needs of businesses and make a difference in digital transformation with increased efficiency and time savings in business processes, Many different solutions are offered, such as document management, fuel stations and retail sales areas.

Logo apps: Authorized business partners who have completed the necessary training and certification processes in Logo’s wide ecosystem and can integrate into Logo solutions using adaptation tools are classified as Logo solution development business partners. These business partners can publish their products, which integrate with Logo ERP products and provide solutions to the special needs of users with the assurance of Logo, on the <http://store.logo.com.tr/logo-apps> site, after the examination of the Logo technical team. These solutions are also positioned as Logo apps.

Field sales management: For businesses which carry out sales operations through field sales teams, the effective and efficient operation of these teams directly affects the profitability of the company. Developed for this purpose, Logo Mobile Sales Field Sales Management solution enables companies to manage customer demands and sales operations in the best way possible. Thanks to the solution’s real-time customized reporting capability, sales teams are able to create reports and share them with customers during meetings, and therefore are able to guide sales decisions more accurately. Also providing coordination between the warehouse and the sales teams, the solution allows for healthier processes carried out on the basis of real-time stock information. At the time of sale, invoices can be printed from anywhere, at any time via printers with a Bluetooth connection. In addition to all this, the costs of the field sales operations are also reduced thanks to advantages such as the ability to plan the routes of the sales teams at the center and the ability to effectively track vehicles.

Customization tools: These are the tools offered by Logo Yazılım to its Logo solution development partners to bring new capabilities to the product. Integration support is provided to solution development business partners by the Logo technical team to bring new capabilities to the product, with integration tools training organized by Logo Academy, and internal use test sets provided free of charge.



For further information about
Logo Netsis 3 Enterprise

For further information about
Logo Netsis 3 Standard



The most valuable IT brand of Turkey



Ecosystem of 5000+ people	800+ Business partners	150.000+ Active customers	1.300+ Employees
---------------------------	------------------------	---------------------------	------------------

Logo is coding the future together with its customers, business partners, employees, investors, and all stakeholders as a company contributing to the sustainable success of its customers. Logo creates value with its customers with passion and agility.

Turkey's largest public software company and the largest local enterprise software company, Logo continues its activities as one of the leading companies in the industry since its foundation in 1984. Logo offers application software solutions to enterprises ranging in size from micro to large corporations. The company, by increasing innovation and creativity in its products and services, lays the foundation for sustainable success by accompanying many companies from 44 countries on their journey of growth, with more than 1,300 employees in 4 different countries at 7 different locations and 800 business partners. Logo is a software company competing at the global level with investments in Romania and India. With Logo Total Soft, the subsidiary in Romania, the company aims to expand its footprint in the domestic market in Romania and in the European market. With its investment in India, Logo carries out product development, promotion, and marketing activities in the Indian market.

In addition to Enterprise Resource Planning, Logo's offering comprises many complementary solutions such as Customer Relationship Management, Human Resources Management, Workflow Management, Warehouse Management Systems, Business Analytics Solutions, Retail Solutions, and e-Government

solutions. It also provides digital transformation consultancy and special project management services. As the leader of the ERP systems in terms of number of customers for many years, Logo boasts a large and robust ecosystem that extends from business partners to Logo users, and from academics to students and industry professionals. Logo pursues its vision to code Turkey's future together thanks to the power it derives from this ecosystem. Logo believes in the dreams of its customers, shares the same goals, and works diligently towards achieving them.

Since its establishment, Logo has become the innovative leader of the industry thanks to its innovative products, services and business processes, and the added value it creates in digital transformation. Logo has invested in different businesses and technologies and has witnessed many breakthroughs and revenue growth in recent years due to organic and inorganic growth. The company has always adopted a fair and transparent management approach and currently has a free- float rate of 66%. Also, Logo is the first IT company to go public in Turkey and the IPO was in 2000.

After a series of strategic investments aiming at transferring the know-how and experience gained in the Turkish market to abroad, it continues the path towards becoming a regional player as one of the industry's leading companies. Logo has been pursuing its firm growth with 38% revenue CAGR (compound annual growth rate) in the last 10 years.



Logo solutions:



Offers high performance



Offer an affordable total cost of ownership



Provides an open platform



Quickly installed



Upgradeable functions in line sector-specific needs



Creates a synergy with common solutions and platforms

Find the closest business partner...



LOGO

