

With Logo Netsis Wings Entegre, your business is at your fingertips anytime, anywhere



LOGO NETSIS WINGS ENTEGRE

Step into the digital transformation with Logo's web-based solution!

Logo Netsis Wings Entegre supports SMEs in every business process!

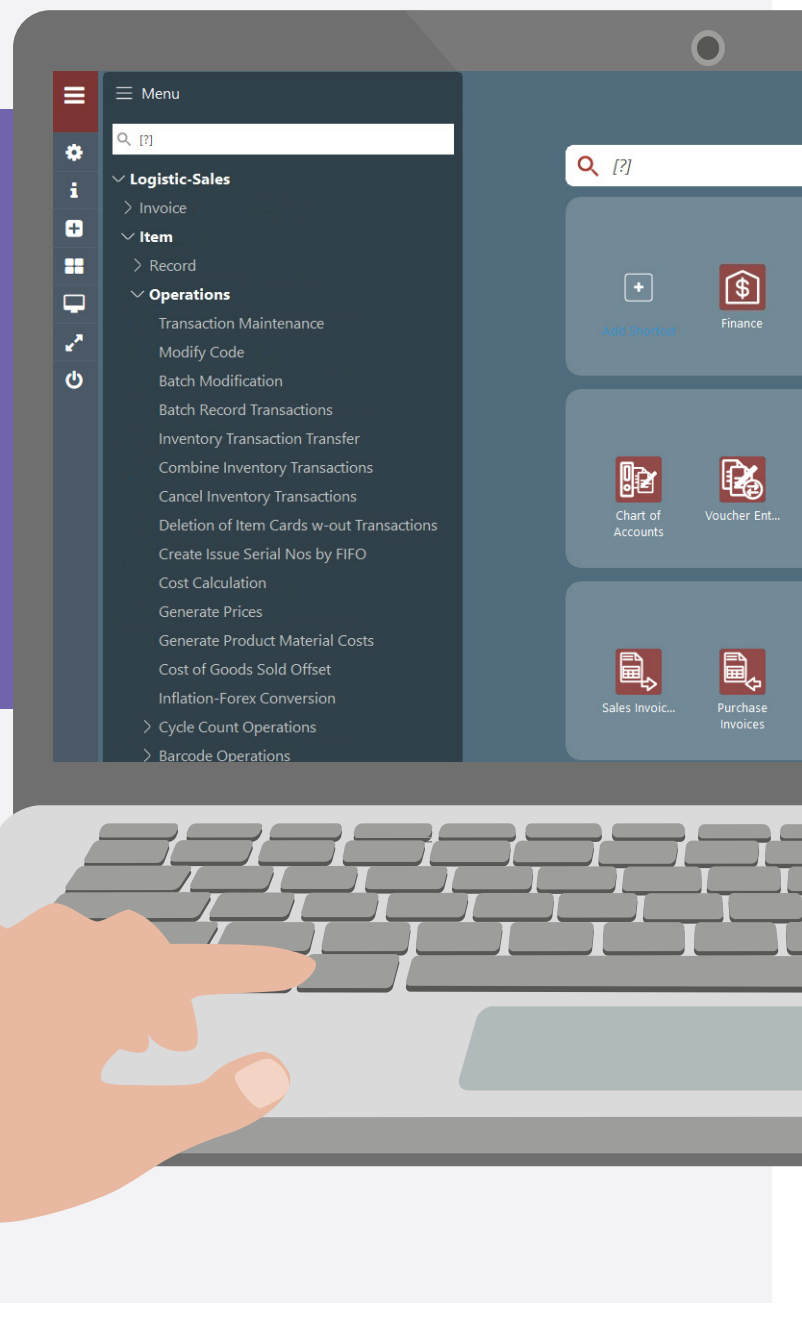
Combining Logo's know-how and innovative vision, web-based Logo Netsis Wings Entegre becomes the companion of SMEs in their growth process, allowing end-to-end management of all business processes from a single source, anywhere and anytime. Features such as the role-based customizable desktop, background images, menu tree, shortcut creation and grouping, app-in-app, and built-in search engine technologies meet the renewed aesthetic design, in line with user comments. Logo Netsis Wings Entegre provides your business with end-to-end efficiency in a short time with the advantages of quick adaptation and ease of use. SMEs are growing with Logo Netsis Wings Entegre!

LOGO **NETSIS** **WINGS** **ENTE GRE**

The best companion for small and medium-sized businesses!

The companion most needed by small and medium-sized businesses in their growth process; a technology solution that incorporates and manages all business processes in real time, from a single source regardless of time and place, and that can be equipped with new features... Developed to perform business processes such as accounting, finance, sales, purchasing, basic production functions, stock and reporting, Logo Netsis Wings Entegre provides a brand new experience to SMEs with its advanced functionality and with the new functions that can be added thanks to the app-in-app technology.

Meeting all the needs of the businesses, **Logo Netsis Wings Entegre** allows them to manage their business processes from a single source with accurate and reliable information **anywhere and anytime**. Take advantage of the comprehensive features of **Logo Netsis Wings Entegre** with its hybrid structure that is both desktop and web-based; lower your costs, take your skills to the next level and always stay one step ahead of the competition!



One solution for all your needs

Allowing you to manage your business processes practically and effectively with much lower costs, Logo Netsis Wings Entegre spreads the idea of quality and efficiency throughout the business, starting with the employees; it allows you to ensure information flow between units, organize complex business processes and manage customer relations effectively. When there is an information entry created into the system, all departments are able to directly access current information within their authority. Simultaneous communication between users saves time and lowers the level of unnecessary communication.

In addition to the standard modules designed in line with your every need, specific solutions for your business can be optionally added to Logo Netsis Wings Entegre. Thus, the most suitable software package for the specific needs of your business becomes ready to use.

Efficiently manage all the components of the channel structure!



Interpret your financial data correctly

You can build reliable infrastructure for your strategic decisions regarding your business and improve your financial performance, thanks to Logo Netsis Wings Entegre allowing you to access correct information instantly with its critical financial functions.

Also, the definitions of payment and collection plans in Logo Netsis Wings Entegre offers flexibility to meet all kinds of needs. Within the limits and rules you set; DFP-DFS, balance and extract reconciliations can be completed and sent electronically. With the Bank module, loans (rotary, spot, etc.), and accounts such as time/demand deposits, repo, collateral accounts (letter of guarantee, letter of credit) are easily monitored. Central Bank codes and international swift codes are monitored, and transactions are performed automatically within the module. The accuracy of bank transactions can be checked from the system; received interest and commission calculations made through the banking transaction options. Credit card collections and banking terms of contracts are entered into the system so payments and deductions are kept under control.

Full control over your commercial activities

Allowing you to scale and report your account plan according to your business and the way you work, Logo Netsis Wings Entegre allows you to take full control of your commercial activities. Thanks to the parametric infrastructure of Logo Netsis Wings Entegre, documents can be transferred directly to accounting, or acknowledged after being checked into the integration pool.

Offering flexibility and efficiency in cost management, Logo Netsis Wings Entegre can report the costs of products sold and in stock with different methods, and also can use the monthly weighted average or FIFO methods in the periodic costing of goods. The cost deduction of goods sold is determined automatically with the calculated costs, the profitability for the period and remaining stock value can be reported with the same costs. In this way, businesses can control costs and take the necessary measures for this purpose to increase profitability.





Integrated foreign trade applications

With Logo Netsis Wings Entegre, foreign trade operations are performed more effectively, more efficiently and in compliance with legal obligations. These liabilities can also be monitored in compatibility and integration with other processes of the business such as accounting, finance, purchasing, sales and distribution.



Reasonable pricing, timely delivery

Shipment processes are as critical to customer satisfaction as production processes. The process, beginning with the creation of all the paperwork required for orders and delivery, and right until the completion of a timely delivery can all be managed in an integrated manner with Logo Netsis Wings Entegre. Information in relation to stocks, orders, delivery notes, invoices and customer debts are easily monitored through the system, while the issue of invoices in foreign currencies for international operations and the tracking of payments in foreign currencies facilitate business processes. In this way, businesses get customer satisfaction and thus a competitive advantage.

With the **Sales Representative Follow-up** application of Logo Netsis Wings Entegre, accounts can be created for those necessary such as salesperson, customer representative, or a sales representative can be introduced based on a current account or selected when entering transactions. Also, sales representatives can be grouped within themselves in terms of reporting.

Effective management of the sales team with sales representative follow-up

Efficient production, low cost

In addition to the smooth and effective management of the production processes, production with maximum cost efficiency is of great importance for businesses. Logo Netsis Wings Entegre Production module makes a significant contribution to the production efficiency by creating a product tree (schedule of materials) definition for the products. In addition, work order records for the orders received can be created and production records can be kept based on these records. Production records can be created in a way to be exactly the same as the definitions of schedule of materials or created by entering the actual quantity. This means time and cost savings in repeated orders. Also, it is possible to follow-up serial/lot and waste in the production processes through Logo Netsis Wings Entegre.





Error-free and automated purchasing processes

Error-free delivery of orders to suppliers prevents many problems from arising. With Logo Netsis Wings Entegre, it is possible to track all transactions from orders to purchase invoices in a connected manner, to keep the entire process under control and automate many transactions. Details such as discounts and forward prices in contracts of suppliers who are regularly worked with can be defined in the Logo Netsis Wings Entegre based on dates, and purchase records can be created. Plans are facilitated by the definition of supply duration and other similar definitions.

Also, businesses that purchase goods directly from the producer in return for a producer receipt can also create a record on Logo Netsis Wings Entegre. As withholdings, can be made in the system, other integrated records can be entered with the producer's current account.

Improve your stock operation quality

Logo Netsis Wings Entegre allows you to create and monitor your stock, targets and strategies, monitor your real-time stock values and levels, and control your inventory costs. Products can be easily tracked thanks to material classification and leveled hierarchy designed for businesses working with various product ranges. While materials can be tracked with an unlimited number of units, thanks to the monitoring feature with different units, reporting processes can be performed through a single unit with the conversion coefficients feature.

With the **Serial/Lot Tracking** application of Logo Netsis Wings Entegre, it is possible to monitor stock entrance/exit and production activities with their serial numbers. The audit reports received can also indicate the real-time warehouse-stock mismatch.

Branch support

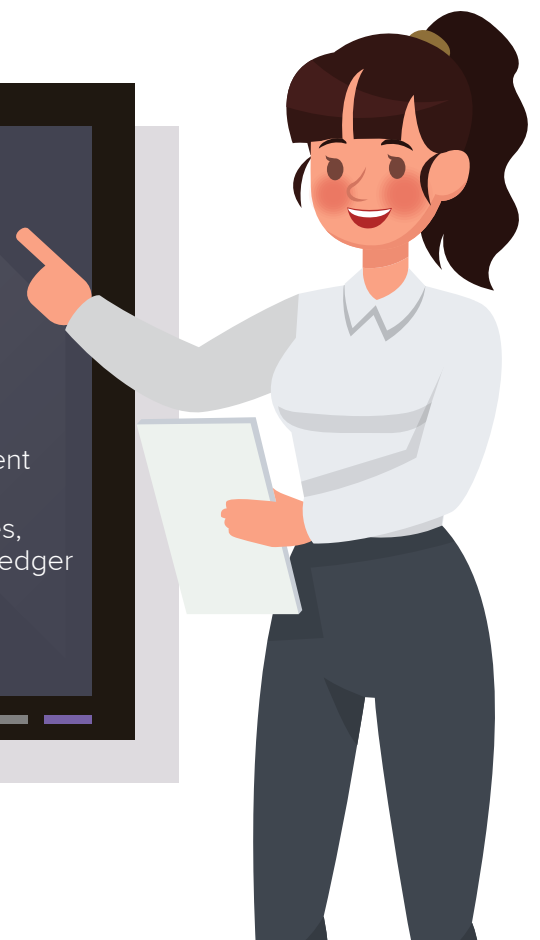
Businesses with multiple branches can create a unique coding system through Logo Netsis Wings Entegre for each branch. In this way, it facilitates the business processes of branches and allows the control of operations in each branch separately. On the other hand, many operations such as orders and costs can be performed on behalf of the branches from headquarters. In this way, record repetition is prevented and every process is centrally managed.



Logo Netsis Wings Entegre PRO is for those who want more

While the Logo Netsis Wings Entegre helps you to manage all processes from production to invoicing from a single source, the Logo Netsis Wings Entegre PRO solution is offered for the SMEs that need a more detailed approach especially in the asset management and accounting applications. In addition to all the features of Logo Netsis Wings Entegre, this solution includes the Asset Management and Accounting Management modules.

The Asset Management module allows you to monitor purchases, sales, depreciation and debit transactions of fixed assets. With the General Ledger module, it is possible to account for records such as invoices, checks, promissory notes, bank, cash from the front modules automatically or through the integration pool.



Cutting-edge technology

While fulfilling its promise to meet all the needs of small and medium-sized businesses thoroughly, Logo Netsis Wings Entegre also meets the requirements arising from company or industry specific differences with its flexible structure. These solutions designed in an upgradeable structure, increase efficiency within business processes without sacrificing security or flexibility.



Customizations and integrations according to your needs

If you have different expectations or specific needs for your business, you can develop applications customized for your company and use them with Logo Netsis Wings Entegre.

Businesses developing their own applications with **NetOpenX** can easily integrate them with Logo Netsis Wings Entegre. With NetOpenX, all records can be imported to Logo Netsis Wings Entegre and data can be received without breaking the current business logic.

The **Netsis Rest API** is an interface which covers the NetOpenX functions, and offers standardization, convenience and consistency for the development of mobile applications or applications that can be used on web. This feature is supported by the REST (Representational State Transfer) Web API infrastructure which is a simple, flexible and capable architecture, and is able to broadcast via the Windows service without an IIS installation.

Human Resources Management, Business Analytics Solutions and Field Sales Management Solutions, work in an integrated manner with Logo Netsis Wings Entegre to increase your business efficiency with integrated management. In addition to these, it is possible to improve your functions with the applications developed by Logo Solution Partners for businesses and industry.

Easy integration with different applications

Authorized login

With Logo Netsis Wings Entegre, it is possible to adjust the access rights of your business's employees as required and provide easy access to the system. **Netsis Single Sign-On System (SSO)** allows you to create only one user name/password for all users who will access Logo Netsis Wings Entegre applications and all applications can be accessed with this user name/password, both on Windows and the Web.



Widgets and apps for those who want more

The widgets and apps provided to meet all the expectations of businesses using Logo Netsis Wings Entegre continue to support Logo's concept of "upgradeable products". The new interface of Logo Netsis Wings Entegre offers design features that will make it easier to use these widgets and apps. For example, the required information can be obtained quickly with the widgets allowing you to view the most frequently used processes on the right bar. You can easily add ready-to-use widgets and apps that are developed by Logo and its Solution Partners in line with your needs and expectations or that can be purchased from the Logo Store, to your desktop and access them with a single click.



Virtual keyboard support

With the virtual keyboard feature of Logo Netsis Wings Entegre, every operation can also be easily performed on touch screen laptops.



User-friendly design

The determining factor in the interface designs is the user experience. The more comfortable the interfaces that connect the technology with the users are, the better the user experience and the adoption rate of solutions used. This is the basis of the interface developed for Logo Netsis Wings Entegre.



Aesthetic and practical design

The background colors, page contrast, icon colors and other dimensions in the interface of Logo Netsis Wings Entegre are aesthetically pleasing with an easy-to-read design. The background can be easily changed at any time, and the font color changes automatically to the selected background. This ensures optimal visual comfort on every background. In addition, different background customizations are available for different companies or different financial periods, providing a convenience supported by the user's visual memory.



Your desktop is just the way you want it

With the "Add New Desktop" feature on the left bar, the main screen can be used with favorite functions only; new functions can be added easily at any time. The functions added to the desktop can be grouped as a folder by dragging and dropping; thus, the interrelated functions are kept together to make the desktop more organized. Providing ease of use, saving time and ensuring productivity, this system appeals to your eyes with its aesthetic design while increasing your work productivity. Allowing you to customize shortcut keys to speed up your processes, Logo Netsis Wings Entegre allows you to make changes to your created shortcut commands. In short, all the features you need on your desktop are brought together in Logo Netsis Wings Entegre.



Stop getting lost among windows

The biggest challenge for users who have to constantly switch between multiple windows is the ability to quickly recognize the right window and open the right page. That is why all open windows in the Logo Netsis Wings Entegre solution are at the bottom of the screen with icons that can be easily seen.





The access tree is on the homepage

Logo Netsis Wings Entegre provides an access tree feature. In this way, it is possible to see all functions from a single source; any function in the menu can be added to the desktop as a shortcut with a single click. Also, when the Mega Menu in the access tree is used in the full screen mode, all menus and sub-menus in the solution can be viewed on one screen.



The easiest way to find something is: To Look for It

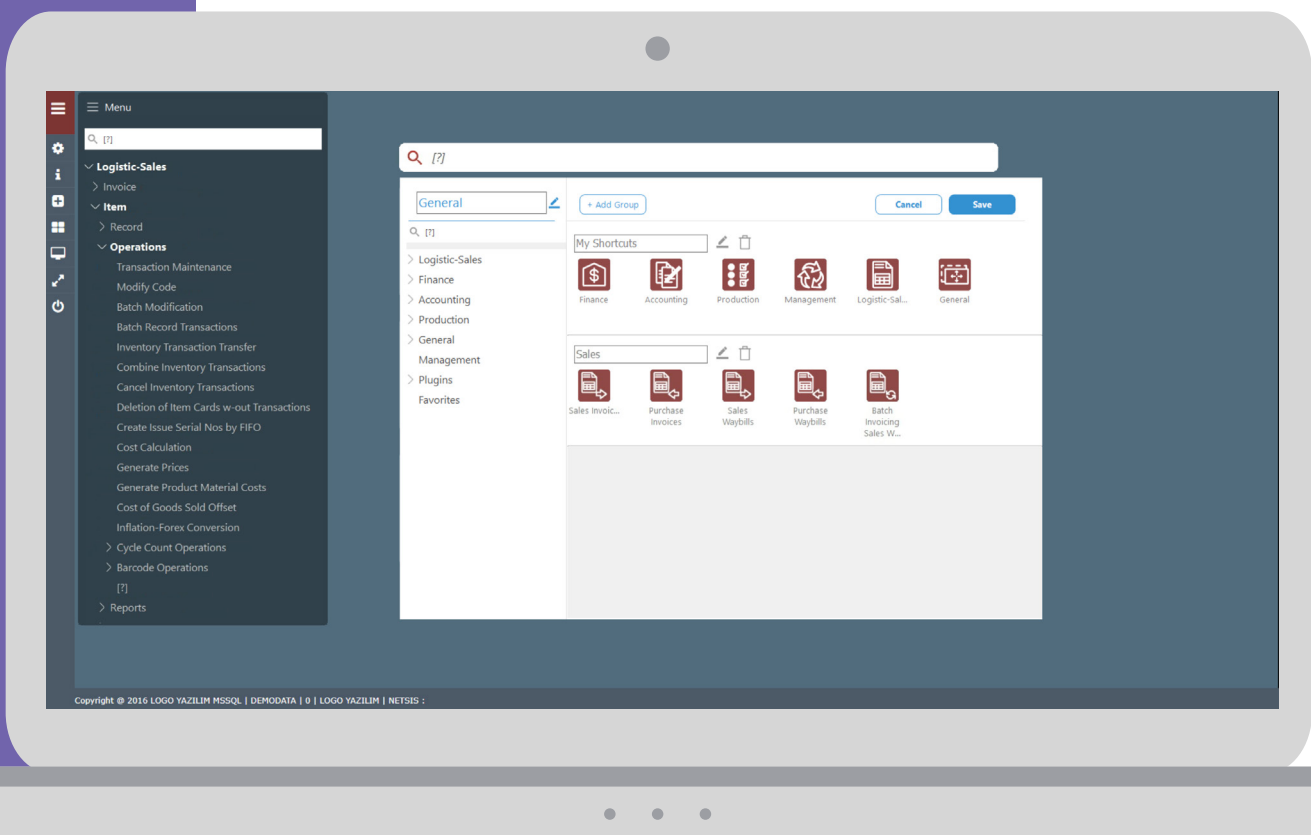
Although the desired functions can be easily accessed through the access tree, it is easy to find what you are looking for in Logo Netsis Wings Entegre with the “search” button that is visible on the desktop.

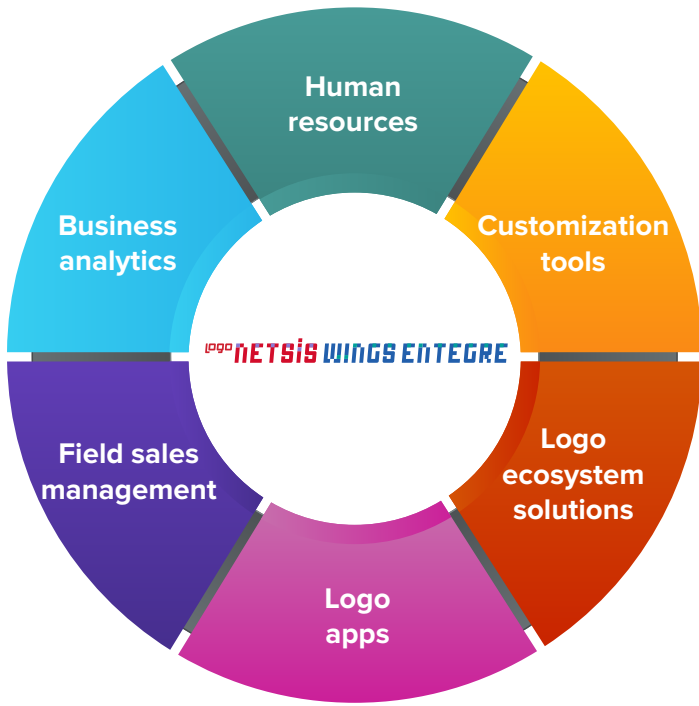
It is now easier to find what you are looking for



Direct access to external links

While using your Logo Netsis Wings Entegre product, you do not need to logout from the system when you need a chart, document, application, folder, or website from a different source. In addition to frequently used Windows programs such as Excel, Word, PowerPoint, the shortcut of any external link can be added to the desktop and all applications can be accessed quickly from within the program.





Our integrated solutions with Logo Netsis Wings Entegre

Business analytics: Businesses are in need of transforming huge amounts of data that does not make sense on its own into significant information and therefore, value. Logo business analytics solutions process data from tens of different sources quickly and meticulously, and provides real-time information and reports to decision-making mechanisms. With the budget management solution, budget processes are managed faster, more flexibly and securely. Logo Business Analytics Solutions help you to stand out against the competition.

Human resources: Agile human resources processes increase the overall service quality of the business and the efficiency of human resources teams. With the HR Solutions provided by Logo, all HR processes are digitalized and add value to businesses. Payroll Solutions also allow for the error-free and fully compliant management with legal legislation of payroll processes of employees.

Field sales management: For businesses which carry out sales operations through field sales teams, the effective and efficient operation of these teams directly affects the profitability of the company. Developed for this purpose, Logo Mobile Sales Field Sales Management solution enables companies to manage customer demands and sales operations in the best way possible. Thanks to the solution's real-time customized reporting capability, sales teams are able to create reports and share them with customers during meetings, and therefore are able to guide sales decisions more accurately. Also providing coordination between the warehouse and the sales teams, the solution allows for healthier processes carried out on the basis of real-time stock information. At the time of sale, invoices can be printed from anywhere, at any time via printers with a Bluetooth connection. In addition to all this, the costs of the field sales operations are also reduced thanks to advantages such as the ability to plan the routes of the sales teams at the center and the ability to effectively track vehicles.

Customization tools: These are the tools offered by Logo Yazılım to its Logo solution development partners to bring new capabilities to the product. Integration support is provided to solution development business partners by the Logo technical team to bring new capabilities to the product, with integration tools training organized by Logo Academy, and internal use test sets provided free of charge.

Logo approved ecosystem solutions: Logo-approved ecosystem solutions," which can be fully integrated with Logo ERP solutions and developed by Logo's solution development partners, offer solutions for the special needs of users. These solutions are Solutions licensed by Logo and sold through Logo price lists.

Data backup, cafe and restaurant management, data transfer between companies, warehouse processes management, technical service, e-commerce and marketplace integration within the scope of Logo-approved ecosystem solutions that diversify according to the specific needs of businesses and make a difference in digital transformation with increased efficiency and time savings in business processes, Many different solutions are offered, such as document management, fuel stations and retail sales areas.

Logo apps: Authorized business partners who have completed the necessary training and certification processes in Logo's wide ecosystem and can integrate into Logo solutions using adaptation tools are classified as Logo solution development business partners. These business partners can publish their products, which integrate with Logo ERP products and provide solutions to the special needs of users with the assurance of Logo, on the <http://store.logo.com.tr/logo-apps> site, after the examination of the Logo technical team. These solutions are also positioned as Logo apps.

For further
information about
Netsis Wings Entegre



The most valuable IT brand of Turkey



Ecosystem of 5000+ people	800+ Business partners	150.000+ Active customers	1.300+ Employees
---------------------------	------------------------	---------------------------	------------------

Logo is coding the future together with its customers, business partners, employees, investors, and all stakeholders as a company contributing to the sustainable success of its customers. Logo creates value with its customers with passion and agility.

Turkey's largest public software company and the largest local enterprise software company, Logo continues its activities as one of the leading companies in the industry since its foundation in 1984. Logo offers application software solutions to enterprises ranging in size from micro to large corporations. The company, by increasing innovation and creativity in its products and services, lays the foundation for sustainable success by accompanying many companies from 44 countries on their journey of growth, with more than 1,300 employees in 4 different countries at 7 different locations and 800 business partners. Logo is a software company competing at the global level with investments in Romania and India. With Logo Total Soft, the subsidiary in Romania, the company aims to expand its footprint in the domestic market in Romania and in the European market. With its investment in India, Logo carries out product development, promotion, and marketing activities in the Indian market.

In addition to Enterprise Resource Planning, Logo's offering comprises many complementary solutions such as Customer Relationship Management, Human Resources Management, Workflow Management, Warehouse Management Systems, Business Analytics Solutions, Retail Solutions, and e-Government

solutions. It also provides digital transformation consultancy and special project management services. As the leader of the ERP systems in terms of number of customers for many years, Logo boasts a large and robust ecosystem that extends from business partners to Logo users, and from academics to students and industry professionals. Logo pursues its vision to code Turkey's future together thanks to the power it derives from this ecosystem. Logo believes in the dreams of its customers, shares the same goals, and works diligently towards achieving them.

Since its establishment, Logo has become the innovative leader of the industry thanks to its innovative products, services and business processes, and the added value it creates in digital transformation. Logo has invested in different businesses and technologies and has witnessed many breakthroughs and revenue growth in recent years due to organic and inorganic growth. The company has always adopted a fair and transparent management approach and currently has a free- float rate of 66%. Also, Logo is the first IT company to go public in Turkey and the IPO was in 2000.

After a series of strategic investments aiming at transferring the know-how and experience gained in the Turkish market to abroad, it continues the path towards becoming a regional player as one of the industry's leading companies. Logo has been pursuing its firm growth with 38% revenue CAGR (compound annual growth rate) in the last 10 years.



Logo solutions:



Offers high performance



Offer an affordable total cost of ownership



Provides an open platform



Quickly installed



Upgradeable functions in line sector-specific needs



Creates a synergy with common solutions and platforms

Find the closest business partner...



LOGO

