

# Manage your business in an integrated way, go beyond the limits!



**LOGO TIGER 3**

**LOGO TIGER 3 ENTERPRISE**

# A new experience in ERP with Logo Tiger 3 Solutions

Developed by combining the know-how of Logo in ERP with new technologies, Logo Tiger 3 ERP Solutions provide a new perspective in the enterprise resource planning processes. Logo Tiger 3 ERP Solutions easily adapt to changing needs with a structure that is scalable, flexible, upgradeable, reliable and industry-independent. Enriched with features such as role-based customizable desktop, app-in-app, and built-in search engine technologies, these solutions can be customized according to needs with its easy integration capability. Logo Tiger 3 ERP Solutions offer a unique end-to-end ERP experience with an aesthetic design developed by considering user comments.

**LOGO TIGER 3**

**LOGO TIGER 3 ENTERPRISE**

# Efficient and effective management for medium-sized and large businesses!

**Logo Tiger 3 ERP Solutions**, developed to meet the Enterprise Resource Planning (ERP) needs of medium and large businesses, offer an end-to-end ERP experience with both its advanced functionality on its own plus new functions that can be added through app-in-app technology.

The **Logo Tiger 3** solution, included in the portfolio of Logo Tiger 3 ERP Solutions, allows **medium and large businesses** operating in many different sectors to manage all business processes efficiently and effectively. Businesses using Logo Tiger 3 solutions **save time and costs** in all processes, from data management to sales operations, and can allocate their resources to activities such as getting into new markets and gaining a global competitive advantage.

**Designed for medium-sized and large businesses with comprehensive manufacturing, Logo Tiger 3 Enterprise** supports sustainable efficiency in production, facilitates processes and meets production processes' needs with its wide range of functions. Thanks to its scalable structure, Logo Tiger 3 Enterprise easily adapts to changing requirements over time.

Whatever sector you work in, you are always one step ahead of the competition with Logo Tiger 3 ERP Solutions, **which provide more effective control and superior efficiency in your business processes!**



# One solution for all your needs

Allowing you to manage your business processes within your enterprise practically and effectively with much lower costs, Logo Tiger 3 ERP Solutions spread the idea of quality and efficiency through all the processes starting with employees. Information flows between the units therefore consist of accurate and up-to-date information, and complicated business processes are simplified and organized. When there is an information entry created into the system, all departments are able to directly access current information within their authority. All activities, from procurement processes to customer relations management, can be managed consistently from a single point. Simultaneous communication between users saves time and lowers the level of unnecessary communication.

Besides the many standard modules developed by considering all your needs, Logo Tiger 3 ERP Solutions offer optional modules where you can find custom solutions for your enterprise. This way, all medium-sized and large businesses can create the optimum ERP package for their needs.



## Interpret your financial data correctly

You can build reliable infrastructure for your strategic business decisions and improve your financial performance thanks to Logo Tiger 3 ERP Solutions, which allow you to access correct information instantly with business-critical financial functions. Logo Tiger 3 ERP Solutions provide the basis for financial performance that provides an advantage not only in the local market competition, but also in international operations within the globalizing economy. With its flexible exchange system and reporting structure, it provides the opportunity to follow international activities and access up-to-date profitability analyses.

The definitions of payment and collection planned in Logo Tiger 3 ERP Solutions offer flexibility to meet all kinds of needs. It can monitor risk and issue electronic warnings within the framework of set limits and rules; and prepare and electronically submit Ba - Bs reconciliations with a single click.

Debt Tracking - 000000000000002 - LOGO YAZILIM

Transacti...	Date	No.	Transaction	Debt	Credit	Debt TL	Credit TL	Remaining Docume...
<input type="checkbox"/>	01.01.2022	01.01.2022	00000000000000000000 Opening Transact	236,00		236,00		TL 236,00
<input type="checkbox"/>	01.01.2022	01.01.2022	00000000000000000000 Opening Transact		15.842,16		15.842,16 TL	15.842,16
<input type="checkbox"/>	14.01.2022	14.01.2022	00000000000000000000 Remittance Trans		3,00		3,00 TL	3,00
<input type="checkbox"/>	14.01.2022	21.01.2022	00000000000000000000 Remittance Trans		3,00		3,00 TL	3,00
<input type="checkbox"/>	14.01.2022	28.01.2022	00000000000000000000 Remittance Trans		3,00		3,00 TL	3,00
<input type="checkbox"/>	01.01.2022	01.01.2022	00000000000000000000 Opening Transact	523,92		1.180,00		USD 523,92
<input type="checkbox"/>	01.01.2022	01.01.2022	00000000000000000000 Opening Transact	139,92		18.887,70		USD 139,92
<input type="checkbox"/>	01.01.2022	01.01.2022	00000000000000000000 Opening Transact	144,44		590,00		USD 144,44
<input type="checkbox"/>	01.01.2022	01.01.2022	00000000000000000000 Opening Transact		2.562,54		14.227,06 EUR	2.562,54

Counter Operation

Date: 01.01.2022

Slip Type: Opening Transaction

Slip No.: 00000000000000000002

Doc. Track. No.: 2.562,54

Amount: 2.562,54

Debit: 51.596,14

Credit: 30.078,22

Debit - Average Due Date: 01.01.2022

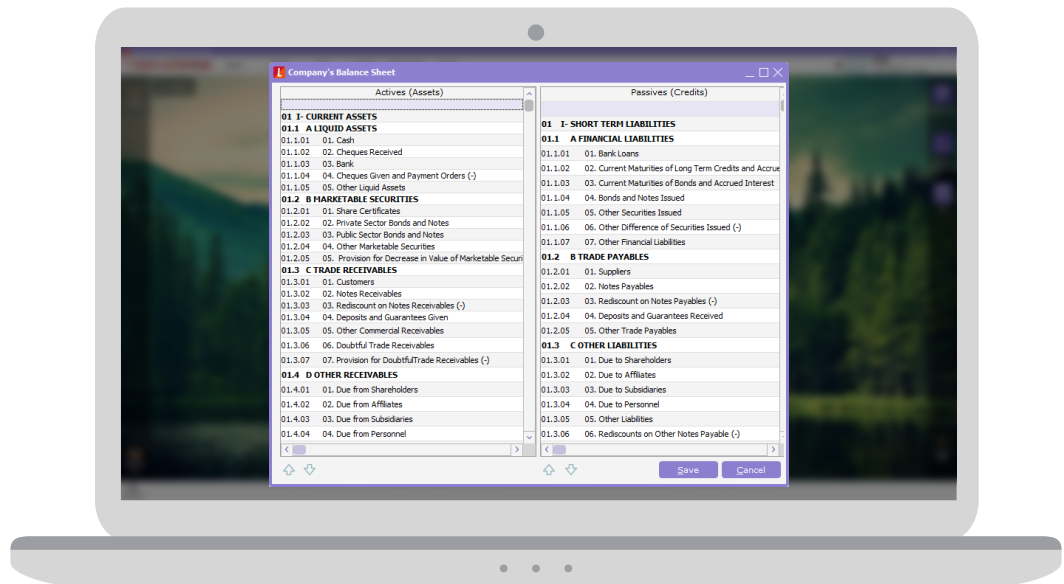
Credit - Average Due Date: 01.01.2022

Debit - Average Day: -76

Credit - Average Day: -76

Close FIFO Close Undo Counter Operation Find Transfer Debt Close





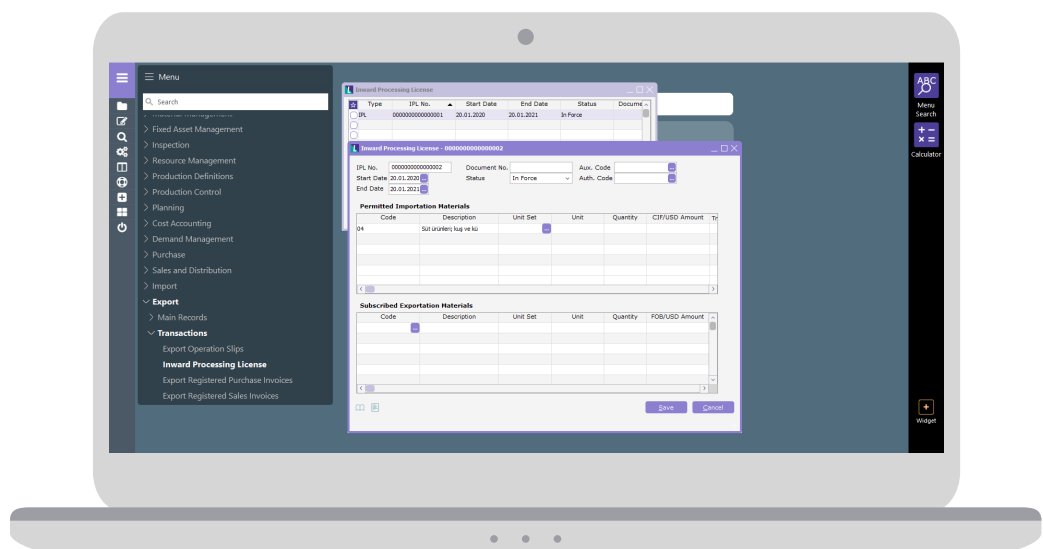
## Central management of company groups

If your business includes more than one company, Logo Tiger 3 ERP Solutions allow you to manage processes effectively in all companies within the group. Thanks to these solutions, group-level profitability can be calculated, inventory can be viewed as a whole, and cashflow can be analyzed for every company.

Thanks to the consolidated statements feature of Logo Tiger 3 ERP Solutions, the assets, liabilities, equities, income and expenses of each company in the group can be combined. Thus, the assets, liabilities, income and expenses and non-cash liabilities of multiple enterprises are presented as they belong to a single partnership, and account owners, investors, audit authorities and other relevant parties can be informed about their financial situation and operational results.

## A more reliable foreign trade structure

The foreign trade module of Logo Tiger 3 ERP Solutions enables import and export operations to be performed more effectively, more efficiently and in compliance with legal obligations. With Logo Tiger 3 ERP Solutions, all liabilities can be monitored in compatibility and integration with other processes such as accounting, finance, purchasing, sales and distribution.





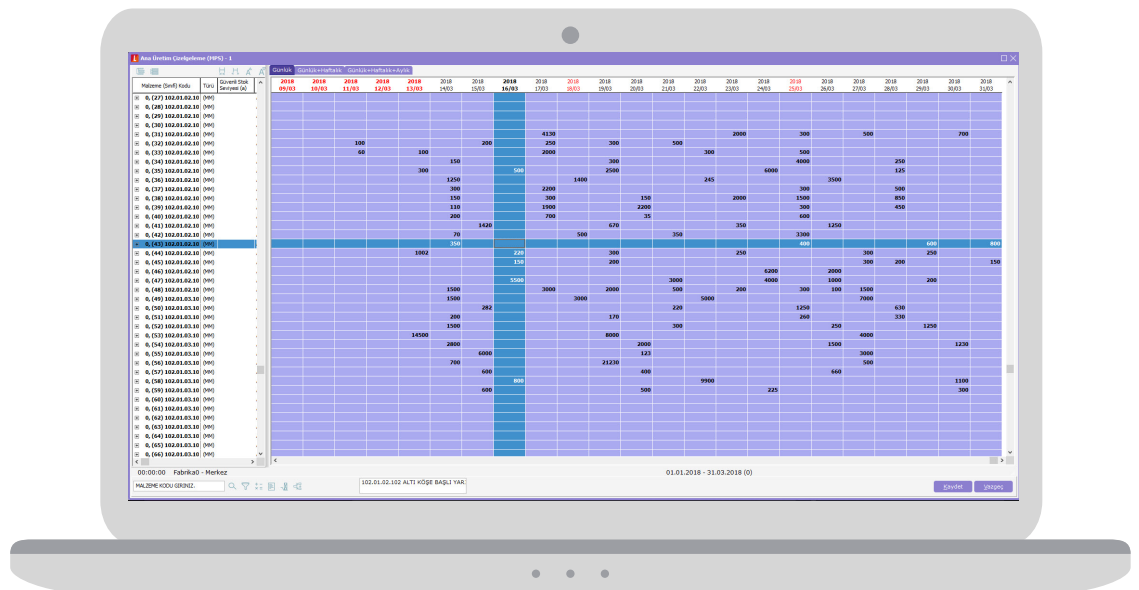
## Efficient production, low cost

Transactions and processes such as controlling complex production processes, compliance with varying customer order deadlines, completion of the supply chain, and the management of stocks based on requirements are the scenarios that manufacturing enterprises need the most and should be designed in advance. For the effective management of the entire process, from a to z, complex systems must be brought together. Logo Tiger 3 Enterprise, which is a Logo Tiger 3 ERP Solution, allows you to manage, monitor and report your production processes on the basis of phases by optimization. Adding quality control results to materials and operations improves production processes and minimizes errors. The production planning methods of Logo Tiger 3 Enterprise calculate material requirements, manage the efficiency of the machines and ensure timely delivery of the orders. the cost accounting module allows you to perform phase-based production cost assessment by calculating the material, general expenses, station and labor costs.



## Master Production Scheduling (MPS)

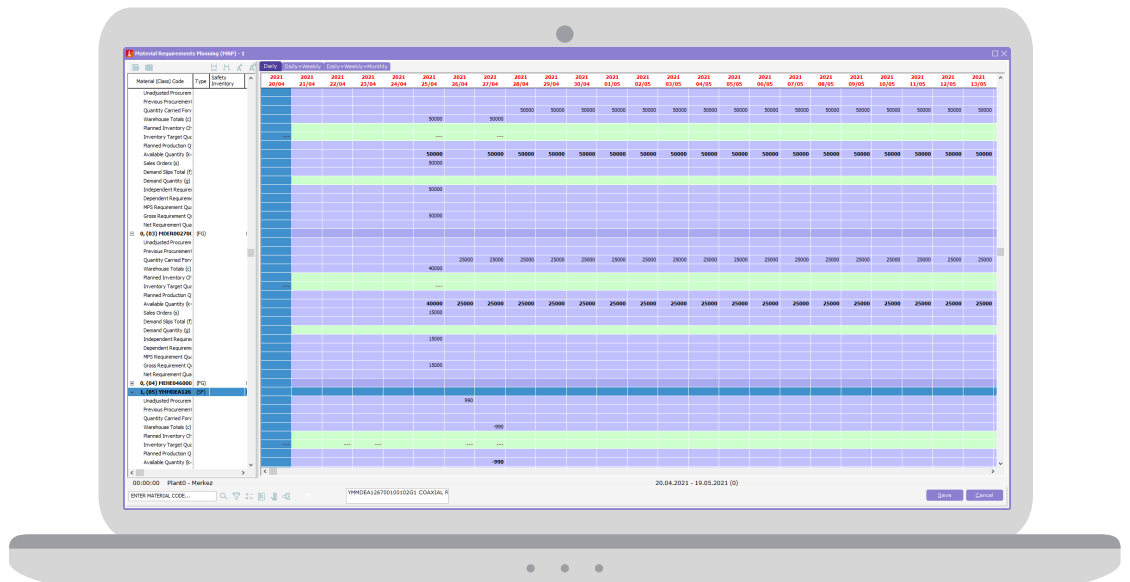
With the Master Production Scheduling (MPS) function, sales orders and requests can be planned according to delivery dates, ensuring timely delivery of orders. The stock status of the materials, the fulfillment amounts according to the orders and demands are visualized on a Gantt chart, making it possible to make quick decisions.





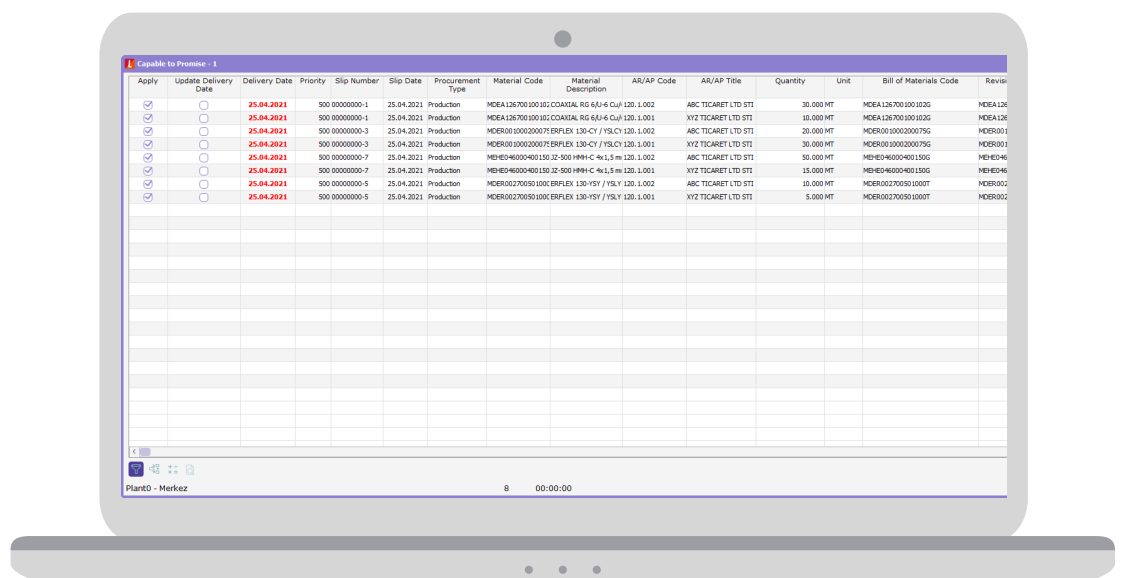
## Material Requirement Planning (MRP)

The Material Requirement Planning (MRP) function allows you to determine the product, semi-finished product and raw material requirements of the related orders daily, weekly, monthly or in specified periods for the orders and requests to be planned. This function allows you to plan carefully in terms of the stock status, capacity, lead times, production times and delivery dates and thus, the orders can be prepared on the requested date. By using the filtering feature in the planning screen, it is possible to make plans not only by the products belonging to the selected orders but also by the finite and infinite capacity with special filters.



## Assigning delivery dates to orders (Capable-to-Promise)

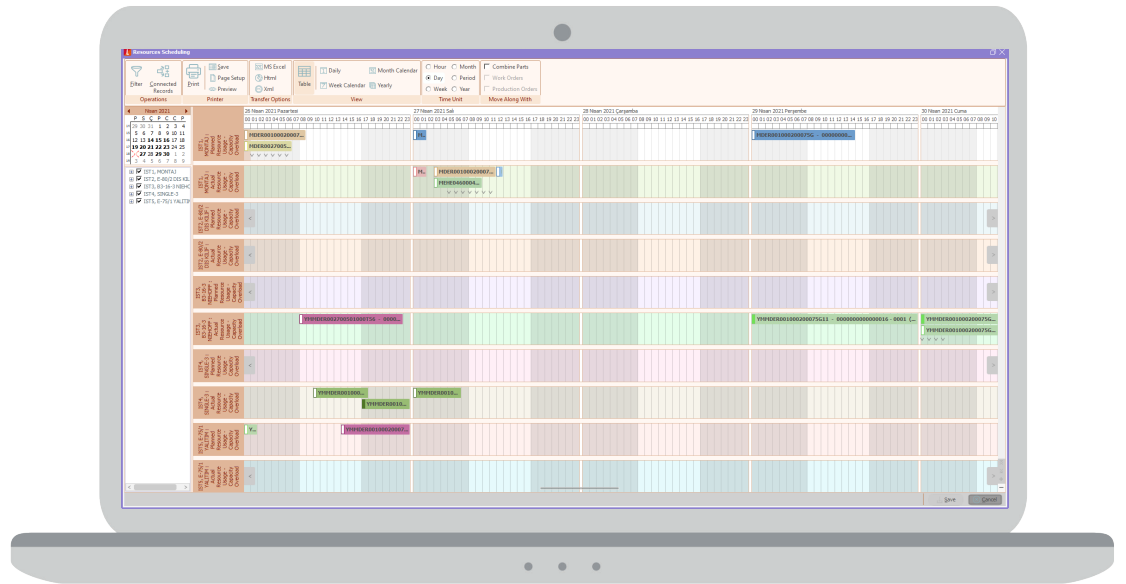
Assigning delivery dates to orders CTP function allows you to determine the most possible and achievable delivery dates for the orders you receive. Using this function, the most appropriate delivery times can be determined effortlessly considering the capacity, stock status, lead time and production times. According to these delivery times, all production stages of the order can be controlled. When assigning delivery dates to multiple orders, material and current account-based priorities are specified and planning processes can be managed more effectively.





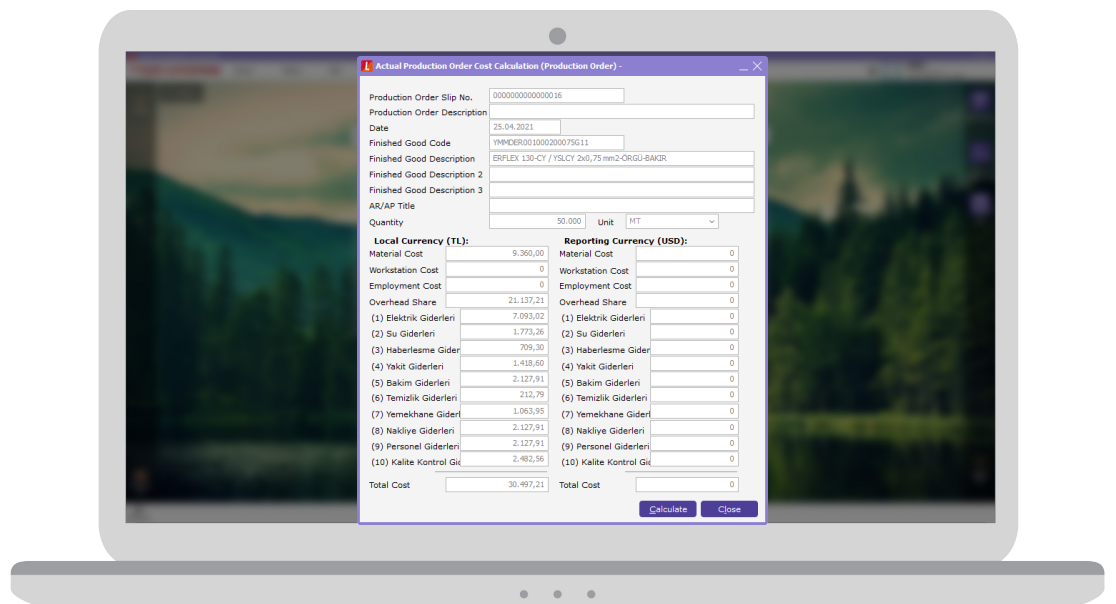
## Capacity scheduling

The capacity scheduling function allows you to monitor planned and ongoing production orders on the Gantt chart and make any necessary changes. Production orders and the dates of the relevant superior and inferior production orders, as well as the production order processing time can all be changed. Scheduling processes can be controlled by directing production orders to alternative machines.



## Cost accounting

The cost accounting, offered to calculate the production costs, allows you perform phase-based production cost assessment by calculating the material, general expenses, station and labor costs. In this way, the costs of productions in the enterprise are calculated by considering all the criteria affecting the relevant production; unit costs can be seen before the sales and if available in stock.





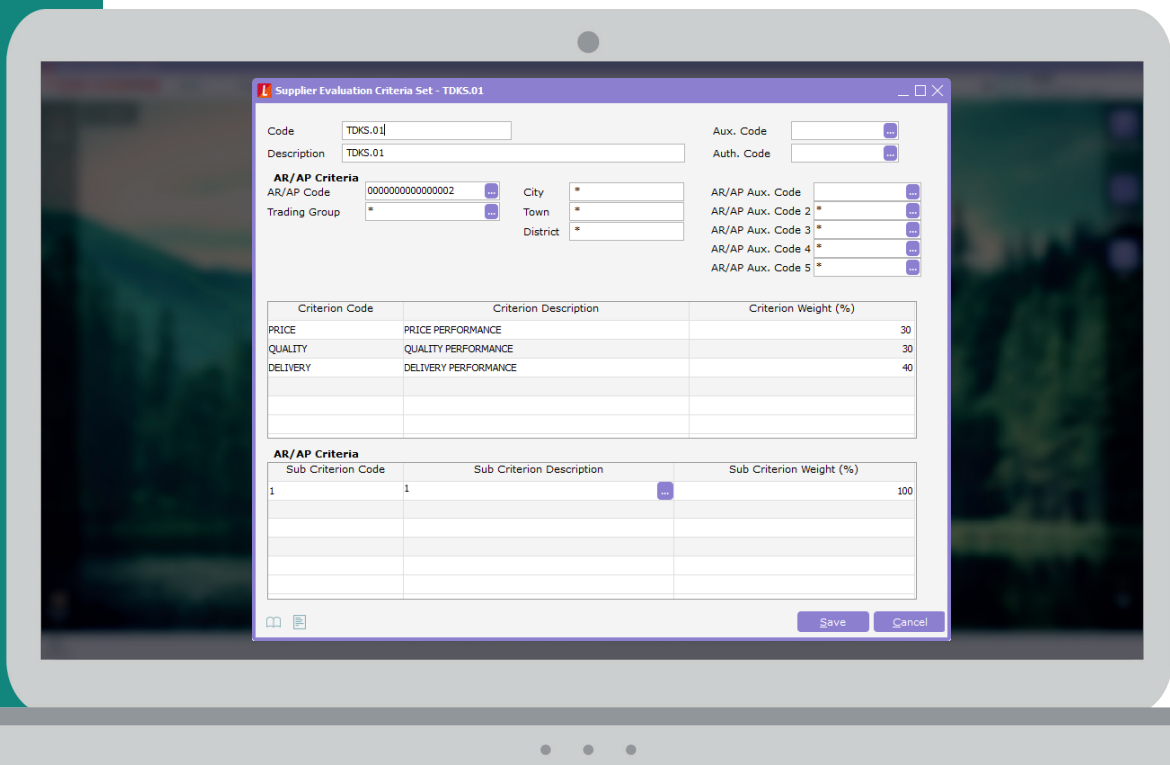
## Choose the most profitable procurement method

The most important criterion in the procurement process is to select suppliers that offer both quality and a reasonable price together. With the Logo Tiger 3 ERP Solutions, it is possible to evaluate the price quotations received from suppliers, compare them and make the decision to purchase quickly. After the supplier selection, time and cost savings can be achieved, as the approval mechanisms and processes associated with document flow are standardized.



## Improve your stock operation quality

Logo Tiger 3 ERP Solutions allow you to create and monitor your stock, targets and strategies, monitor your real-time stock values and levels, and control your inventory costs. Products can be easily tracked thanks to material classification and leveled hierarchy designed for businesses working with various product ranges. The same type of materials can be monitored based on different criteria, and a change that concerns thousands of materials can be updated by changing only a single definition within its matrix interface. While materials can be tracked with an unlimited number of units, thanks to the monitoring feature with different units, reporting processes can be performed through a single unit with the conversion coefficients feature. In Logo Tiger 3 ERP Solutions, the dimensions of the material or stock boxes are recorded with the definition of "dimension", and the most suitable placement can be calculated according to this information both in the warehouse and during the logistics process.



## Reasonable pricing, timely delivery

Processes such as pricing, quick quoting, and shipment are critical for the customer satisfaction. The process, beginning with the creation of all the paperwork required for the orders and delivery, and lasting until the completion of a timely delivery can be managed in an integrated manner with Logo Tiger 3 ERP Solutions. The system also allows seamless issuance of invoices in foreign currencies as well as in Turkish liras, and monitoring of foreign currency payments, thereby facilitating overseas operations and sales processes.

The convenience provided by Logo Tiger 3 ERP Solutions starts with the product selection and pricing processes by the sales team. Your sales team, choosing the most suitable products for the customer among the alternatives that can be thousands of products sometimes, makes the most appropriate pricing quickly through the system. In order to support the customer management processes and help the sales team, customer information and business relations can be tracked by dates. Special templates can be created for regular customers and offers can be prepared automatically.

With Logo Tiger 3 ERP Solutions, the most suitable campaign strategies for customers and products can be easily determined and the data collected from these campaigns is analyzed with results obtained to guide future campaigns.

The quality of service offered to customers increases as operations are managed properly and timely with an efficient sales and distribution process, and the improvement in customer satisfaction is reflected in your company as a competitive advantage.

Logo Tiger 3 ERP Solutions, including applications aimed at evaluating and improving the performance of the sales team, allow you to set sales targets based on the sales representatives and measure performance accordingly. It is also possible to determine a route through the system and create an effective distribution plan to organize the visit plans of the sales personnel in the most effective and efficient way.



# Cutting-edge technology

While fulfilling its promise to meet enterprise resource planning needs of businesses thoroughly, Logo Tiger 3 ERP Solutions also meet the requirements arising from the company or industry specific differences with its flexible structure. Businesses using Logo Tiger 3 ERP Solutions can create the ideal ERP package by using modules and add-ins that best suit their needs.



## The Logo solution family as a whole

Many solutions in the Logo portfolio can be integrated into Logo Tiger 3 ERP Solutions quickly and smoothly. Logo Tiger 3 ERP Solutions, which can work in an integrated way with human resources management solutions, business analytics solutions, field sales management solutions, do not limit your corporate processes to resource planning only, these solutions also provide integrated management and increase your business efficiency.



## Analyze at a glance with the manager console

The manager console of Logo Tiger 3 ERP provides a great advantage for the top management in order to see the whole picture and get instant information. The indicators in the console can be easily customized according to the manager's focus or changing expectations. For example, the best selling products, the most active customers, stock and accounts receivable turnover rates, cash and bank status can be controlled from a single panel. In addition to the instant status, summary information can also be obtained to shorten managers' decision-making processes, and this provides agility and flexibility.



## Widgets and apps for those who want more

The widgets and apps provided to meet all the expectations of businesses using Logo Tiger 3 ERP Solutions continue to support Logo's concept of "upgradeable products". In addition to the standard features included in the product, many functions or additional features can be downloaded as an app or widget with a single click. Current applications can be upgraded if needed with the applications that can be integrated into the system through the app-in-app technology in Logo Tiger 3 ERP Solutions. Depending on the features of the application downloaded, these new features can also be used regardless of the platform.

The new interface of Logo Tiger 3 ERP Solutions offers design features that will make it easier to use these widgets and apps. For example, the required information can be obtained quickly with the widgets, allowing you to view the most frequently used processes on the right bar. You can easily add ready-to-use widgets and apps that are developed by Logo and its Solution Partners in line with your needs and expectations or that can be purchased from the Logo Store, to your desktop and access them with a single click.



# User-friendly design

The determining factor in the interface designs is the user experience. The more comfortable the interfaces that connect the technology with the users are, the better the user experience and the adoption rate of solutions used. This is the basis of the new interfaces developed for Logo Tiger 3 ERP Solutions.



## Supporting you from your first step

Logo is with you from the first moment you started using Logo Tiger 3 ERP Solutions! With the first installation, we welcome you with a tour that tells you what features you can access, which functions you can use and how to use them. Clear, simple and effective, these guides are at your service not only for the solutions but also for apps and other add-ins.



## Your desktop is just the way you want it

The main screen can now be split into frequently used functions thanks to the “add new desktop” feature on the left bar and you can add new functions at any time easily. The functions added to the desktop can be grouped as a folder by dragging and dropping; thus, the interrelated functions are kept together to make the desktop more organized. Providing ease of use, saving time and ensuring productivity, this system appeals to your eyes with its aesthetic design while increasing your work productivity.

Allowing you to customize shortcut keys to speed up your processes, Logo Tiger 3 ERP Solutions allow you to make changes to your created shortcut commands. In short, all the features you need on your desktop are brought together in Logo Tiger 3 ERP Solutions.



## Aesthetic and practical design

In the new interface of Logo Tiger 3 ERP Solutions; background colors, page contrast, icon colors, and sizes are rearranged to create a more aesthetic and easy-to-read design. The background can be easily changed at any time, and the font color changes automatically to the selected background. This ensures optimal visual comfort on every background.



## Stop getting lost among windows

The biggest challenge for users who have to constantly switch between multiple windows is the ability to quickly recognize the right window and open the right page. For this reason, in Logo Tiger 3 ERP Solutions, all open windows are presented at the bottom of the screen with icons that can be easily followed.





## The access tree is on the homepage

With the access tree feature of Logo Tiger 3 ERP Solutions, users can see all the functions from a single source; any function can be added to the desktop as a shortcut with a single click. Also, when the mega menu in the access tree is used in the full screen mode, all menus and sub-menus in the solution can be viewed on one screen.



## The easiest way to find something is: search

Although you can easily access the desired functions through the access tree, it is now easy to find what you are looking for in Logo Tiger 3 ERP Solutions as the “search” button is more visible on the desktop.



## Customized and module independent forms

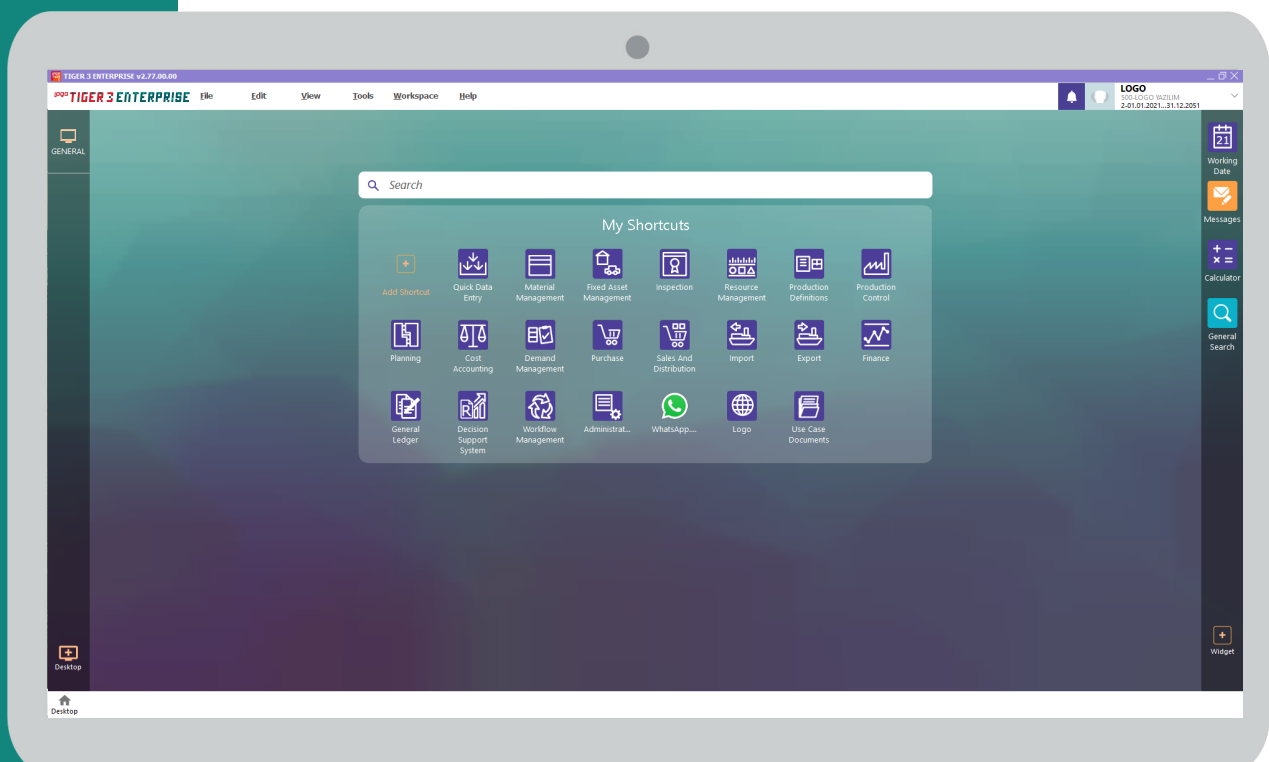
You can add new fields to the forms in Logo Tiger 3 ERP Solutions and you can easily search the lists in these fields. This feature of Logo Tiger 3 ERP Solutions makes it possible to customize the forms developed with easy and fast visual adaptation for users without knowing a programming language. In addition, you can easily enter all data into the forms created with Logo Tiger 3 ERP Solutions using the wizard.

In addition, you can open the screens of different modules simultaneously and perform the relevant tasks. In this way, required information is obtained without closing the screen, regardless of the module.



## Direct access to external links

While using your Logo Tiger 3 ERP Solution, you do not need to logout from the system when you need a chart, document, application, folder, or website from a different source. In addition to frequently used Windows programs such as Excel, Word, PowerPoint, the shortcut of any external link can be added to the desktop and all applications can be accessed quickly from within the program.



# Our integrated solutions with Logo Tiger 3 Enterprise and Logo Tiger 3



**Field sales management:** For businesses which carry out sales operations through field sales teams, the effective and efficient operation of these teams directly affects the profitability of the company. Developed for this purpose, Logo Mobile Sales Field Sales Management solution enables companies to manage customer demands and sales operations in the best way possible. Thanks to the solution's real-time customized reporting capability, sales teams are able to create reports and share them with customers during meetings, and therefore are able to guide sales decisions more accurately. Also providing coordination between the warehouse and the sales teams, the solution allows for healthier processes carried out on the basis of real-time stock information. At the time of sale, invoices can be printed from anywhere, at any time via printers with a Bluetooth connection. In addition to all this, the costs of the field sales operations are also reduced thanks to advantages such as the ability to plan the routes of the sales teams at the center and the ability to effectively track vehicles.

**Human resources:** Agile human resources processes increase the overall service quality of the business and the efficiency of human resources teams. With the HR Solutions provided by Logo, all HR processes are digitalized and add value to businesses. Payroll Solutions also allow for the error-free and fully compliant management with legal legislation of payroll processes of employees.

**Business analytics:** Businesses are in need of transforming huge amounts of data that does not make sense on its own into significant information and therefore, value. Logo business analytics solutions process data from tens of different sources quickly and meticulously, and provides real-time information and reports to decision-making mechanisms. With the budget management solution, budget processes are managed faster, more flexibly and securely. Logo Business Analytics Solutions help you to stand out against the competition.



For further  
information about  
Logo Tiger 3 Enterprise

For further  
information about  
Logo Tiger 3



# The most valuable IT brand of Turkey



Ecosystem of 5000+ people	800+ Business partners	150.000+ Active customers	1.300+ Employees
---------------------------	------------------------	---------------------------	------------------

Logo is coding the future together with its customers, business partners, employees, investors, and all stakeholders as a company contributing to the sustainable success of its customers. Logo creates value with its customers with passion and agility.

Turkey's largest public software company and the largest local enterprise software company, Logo continues its activities as one of the leading companies in the industry since its foundation in 1984. Logo offers application software solutions to enterprises ranging in size from micro to large corporations. The company, by increasing innovation and creativity in its products and services, lays the foundation for sustainable success by accompanying many companies from 44 countries on their journey of growth, with more than 1,300 employees in 4 different countries at 7 different locations and 800 business partners. Logo is a software company competing at the global level with investments in Romania and India. With Logo Total Soft, the subsidiary in Romania, the company aims to expand its footprint in the domestic market in Romania and in the European market. With its investment in India, Logo carries out product development, promotion, and marketing activities in the Indian market.

In addition to Enterprise Resource Planning, Logo's offering comprises many complementary solutions such as Customer Relationship Management, Human Resources Management, Workflow Management, Warehouse Management Systems, Business Analytics Solutions, Retail Solutions, and e-Government

solutions. It also provides digital transformation consultancy and special project management services. As the leader of the ERP systems in terms of number of customers for many years, Logo boasts a large and robust ecosystem that extends from business partners to Logo users, and from academics to students and industry professionals. Logo pursues its vision to code Turkey's future together thanks to the power it derives from this ecosystem. Logo believes in the dreams of its customers, shares the same goals, and works diligently towards achieving them.

Since its establishment, Logo has become the innovative leader of the industry thanks to its innovative products, services and business processes, and the added value it creates in digital transformation. Logo has invested in different businesses and technologies and has witnessed many breakthroughs and revenue growth in recent years due to organic and inorganic growth. The company has always adopted a fair and transparent management approach and currently has a free- float rate of 66%. Also, Logo is the first IT company to go public in Turkey and the IPO was in 2000.

After a series of strategic investments aiming at transferring the know-how and experience gained in the Turkish market to abroad, it continues the path towards becoming a regional player as one of the industry's leading companies. Logo has been pursuing its firm growth with 38% revenue CAGR (compound annual growth rate) in the last 10 years.



## Logo solutions:



Offers high performance



Offer an affordable total cost of ownership



Provides an open platform



Quickly installed



Upgradeable functions in line sector-specific needs



Creates a synergy with common solutions and platforms

Find the closest business partner...



**logo**

