

Your enterprise is with you, your business is under control!



LOGO TIGER WINGS

LOGO TIGER WINGS ENTERPRISE

Take your place in the digital transformation with
Logo's WEB based ERP solutions!

Free your ERP system with Logo Tiger Wings and Logo Tiger Wings Enterprise!

Developed by Logo combining the know-how in ERP with the new technologies, the Wings product family provides a new perspective in the enterprise resource planning processes. Logo Tiger Wings and Logo Tiger Wings Enterprise offer an even more comfortable solution with features such as the role-based customizable desktop, app-in-app, and built-in search engine technologies, as well as web-based access. The Wings product family provides an ERP experience independent of time and place, allowing you to manage your enterprise thoroughly anywhere, anytime.

 **TIGER WINGS**

 **TIGER WINGS ENTERPRISE**

Manage all your processes efficiently with our enterprise resource planning solutions, Logo Tiger Wings and Logo Tiger Wings Enterprise!

Developed to meet the enterprise resource planning (ERP) needs of the medium-sized and large businesses, the Wings product family is offered as a solution that is compatible with the mobile world and goes beyond the standard ERP solutions, thanks to its web-based access. Wings ERP solutions provide an end-to-end ERP experience independent of time and place, both with their advanced functionality and new functions that can be added through app-in-app technology.

The Wings product family can be used with any web browser, allowing all company employees, from the sales teams to managers, to manage their business processes efficiently, effectively and through mobile platforms. Enterprises using Wings ERP solutions save time and cost in every process from data management to sales operations, and can allocate their resources to activities such as getting into new markets and gaining a global competitive advantage. Thanks to its scalable structure, Wings solutions easily adapt to changing requirements over time.

Whatever sector you work in, ***your enterprise is at your fingertips anytime and anywhere*** with Logo Wings ERP solutions which provide more effective control, superior efficiency and more flexibility in your business processes!

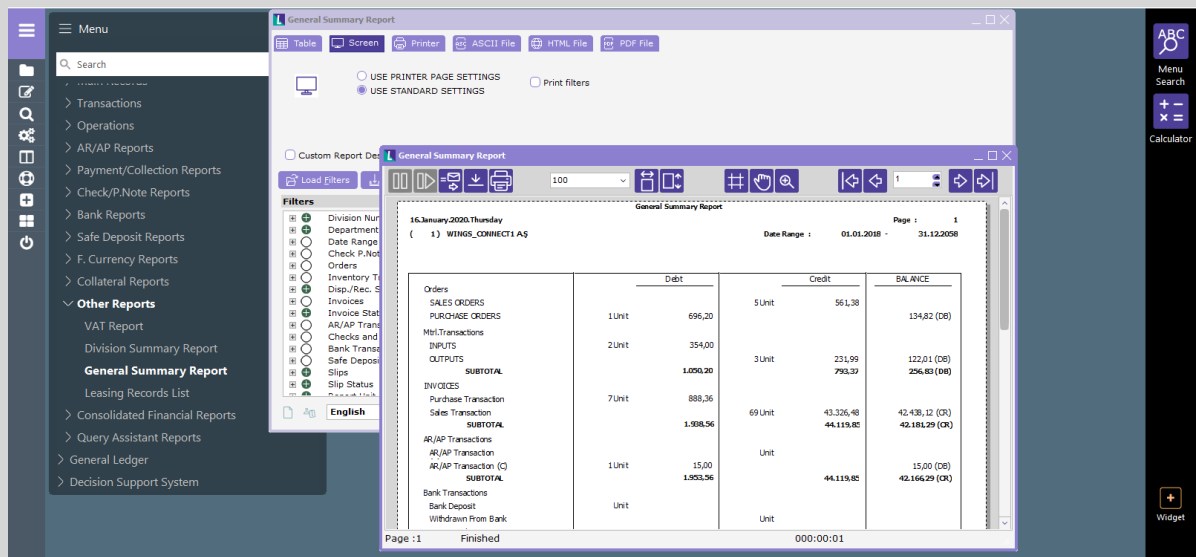


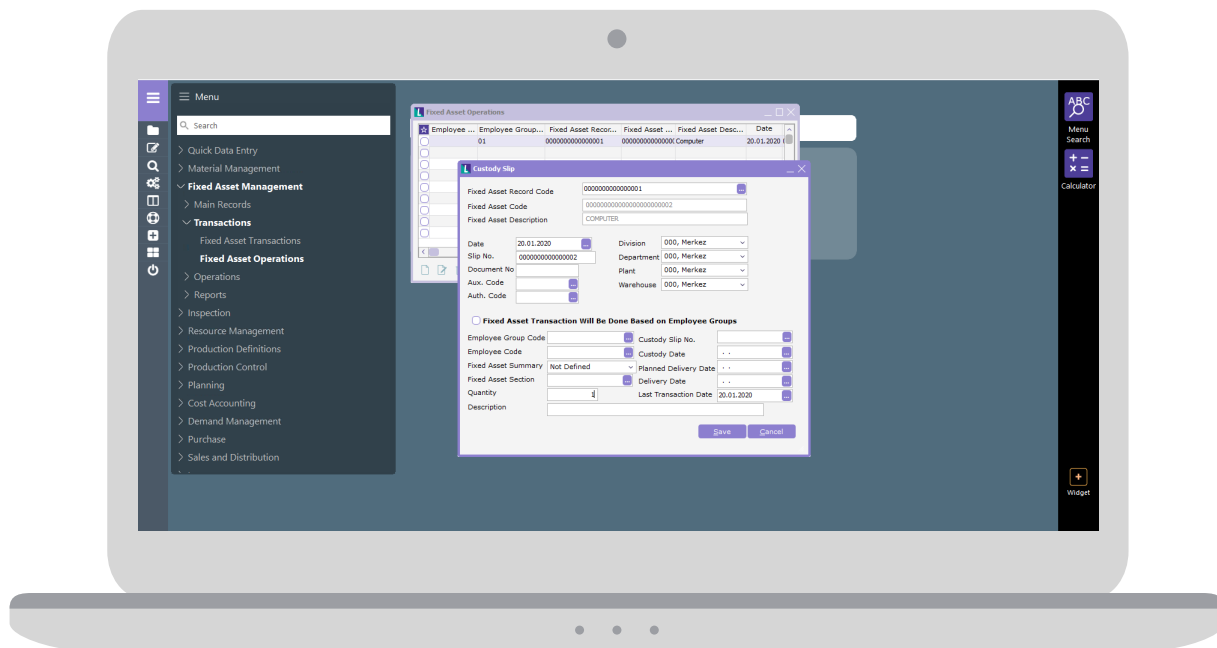
One solution for all your needs

Allowing you to manage your business processes in a much easier, practical, flexible and effective way, Logo Wings ERP solutions developed with the concept of quality and efficiency make it possible to manage all your process with this concept. Information flows between units therefore consisting of accurate and up-to-date information, and complicated business processes are simplified and organized.

Accurately interpret your financial data

Logo Wings ERP solutions provide the basis for financial performance that enables an advantage not only in the local market competition, but also in the international operations of the globalizing economy. With its flexible exchange system and reporting structure, it provides the opportunity to follow international activities and access up-to-date profitability analyses. The definitions of payment and collection planned in Logo Tiger Wings and Logo Tiger Wings Enterprise solutions offer flexibility to meet all kinds of needs. It can monitor risk and issue electronic warnings within the framework of set limits and rules; and prepare and electronically submit Ba-Bs reconciliations with a single click.





Central management of company groups

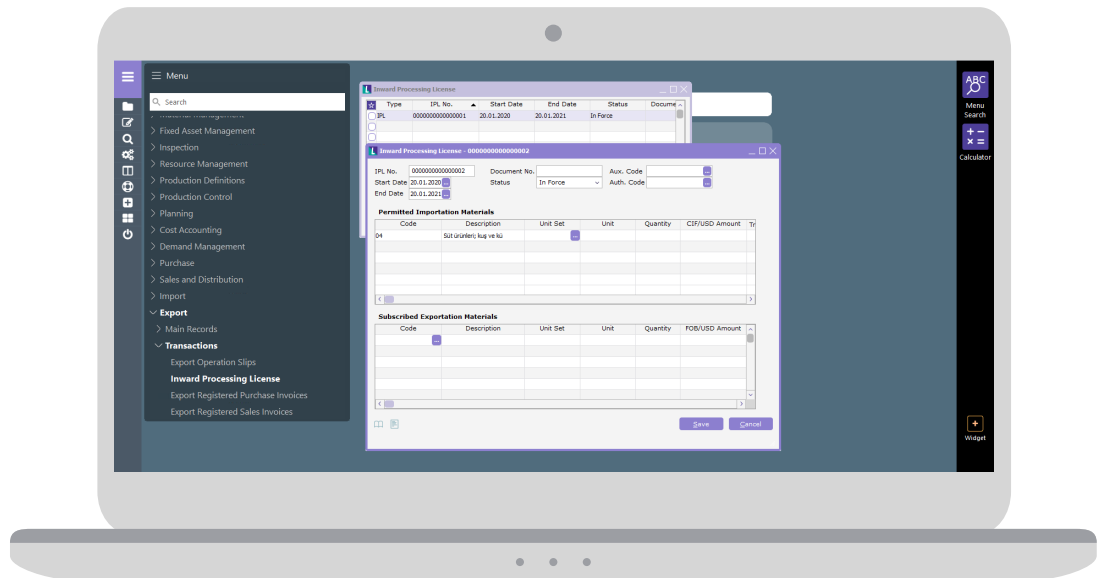
If your business includes more than one company, Logo Wings ERP solutions allow you to manage processes effectively in all companies within the group. Thanks to this ability, offered via the Finance Management Screen, group-level profitability can be calculated, inventory can be viewed as a whole, and cashflow can be analyzed for every company.

With the **consolidated statements** feature, the assets, liabilities, equities, income and expenses of each company in the group can be combined. Thus, the assets, liabilities, income and expenses and non-cash liabilities of multiple enterprises are presented as they belong to a single partnership, and account owners, investors, audit authorities and other relevant parties can be informed about their financial situation and operational results.



A more reliable foreign trade structure

The foreign trade screen of Logo Wings ERP solutions enables import and export operations to be performed more effectively, more efficiently and in compliance with legal obligations. With ERP, all liabilities can be monitored in compatibility and integration with other processes such as accounting, finance, purchasing, sales and distribution.



Efficient production, low cost

Transactions and processes such as controlling complex production processes, compliance with varying customer order deadlines, completion of the supply chain, and the management of stocks based on requirements are the scenarios that manufacturing enterprises need the most and should be designed in advance. For the effective management of the entire process, from a to z, complex systems must be brought together. Logo Tiger Wings Enterprise allows you to manage, monitor and report your production processes on the basis of phases by optimization. Adding quality control results to materials and operations improves production processes and minimizes errors. The production planning methods of Logo Tiger Wings Enterprise calculate the material requirements, manage the efficiency of the machines and ensure timely delivery of orders.





The screenshot displays the SAP Master Production Schedule (MPS) interface. On the left, a navigation menu is visible with the 'Planning' section expanded, showing 'Production Planning' and its sub-items: 'Master Production Schedule (MPS)', 'Material Requirements Planning (MRP)', 'MRP Net Change', 'Capable to Promise (CTP)', 'Capacity Planning', 'Transactions', 'Operations', and 'Reports'. The main window title is 'Master Production Schedule (MPS) - 1 - 4: This form is not customizable with LMS+'. The window contains a table with columns for Material (Class) Code, Type, Safety Inventory, Main Unit, and a series of dates from 2020/01/20 to 2020/01/26. The table data shows various quantities for different materials and dates. At the bottom, there is a status bar with the text '00:00:00 Plant0 - Merkez' and a search field labeled 'ENTER MATERIAL CODE...'. The bottom right corner of the window has 'Save' and 'Cancel' buttons.

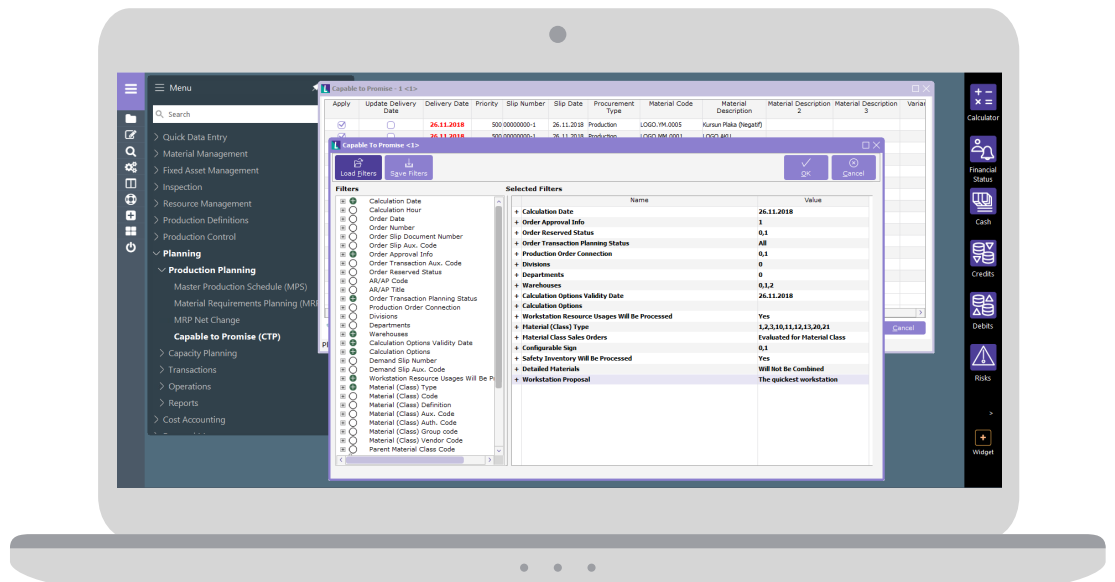
Material Requirements Planning (MRP)

The screenshot displays the SAP Material Requirements Planning (MRP) Planning Calendar interface. On the left, a navigation menu lists various SAP functions, with the 'Planning' section expanded to show 'Production Planning', 'Master Production Schedule (MPS)', 'Material Requirements Planning (MRP)', 'MRP Net Change', and 'Capacity to Promise (CTP)'. The main window is titled 'Material Requirements Planning (MRP) - 1' and contains a table with columns for 'Material (Class) Code', 'Type', 'Safety', 'Inventory', and a grid of dates from 26/11 to 09/12. A context menu is open over the table, offering options: 'Filter', 'Calculate', 'Additional Info and Warnings', 'Warehouse Total Details', and 'Back to Defaults'. The bottom status bar shows '00:00:00 Plant0 - Metzer' and 'ENTER MATERIAL CODE...'.



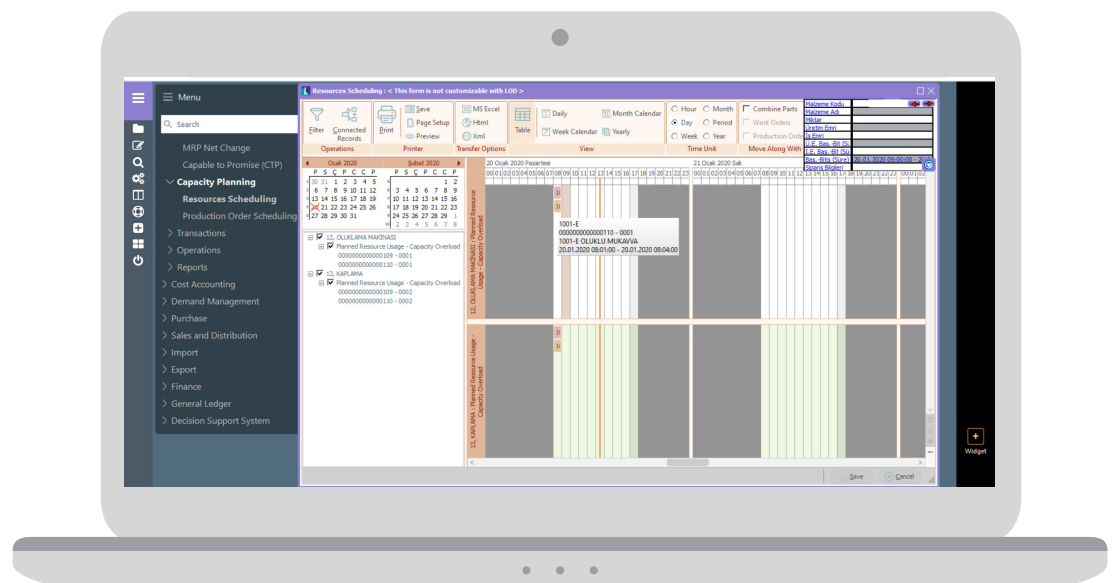
Assigning delivery dates to orders (Capable-to-Promise)

The Capable-to-Promise function allows you to determine the most possible and achievable delivery dates for the orders you receive. Using this function, the most appropriate delivery times can be determined effortlessly considering the capacity, stock status, lead time and production times. According to these delivery times, all production stages of the order can be controlled. When assigning delivery dates to multiple orders, material and current account-based priorities are specified and planning processes can be managed more effectively.



Capacity scheduling

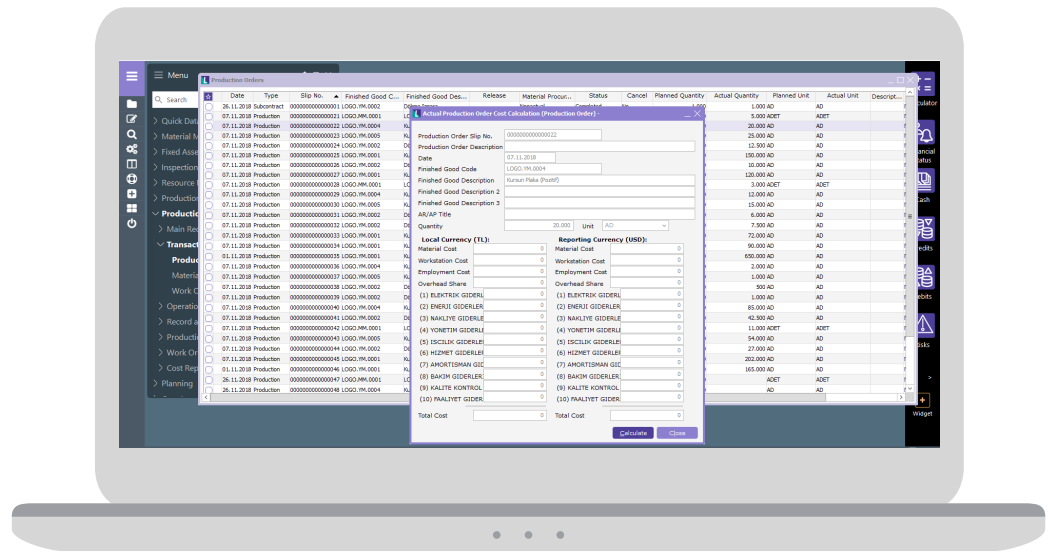
The capacity scheduling function allows you to monitor planned and ongoing production orders on the Gantt chart and make any necessary changes. Production orders and the dates of the relevant superior and inferior production orders, as well as the production order processing time can all be changed. Scheduling processes can be controlled by directing production orders to alternative machines.





Cost accounting

The cost accounting module of Logo Tiger Wings Enterprise allows you perform phase-based production cost assessment by calculating the material, general expenses, station and labor costs. In this way, the costs of productions in the enterprise are calculated by considering all the criteria affecting the relevant production; unit costs can be seen before the sales and if available in stock.

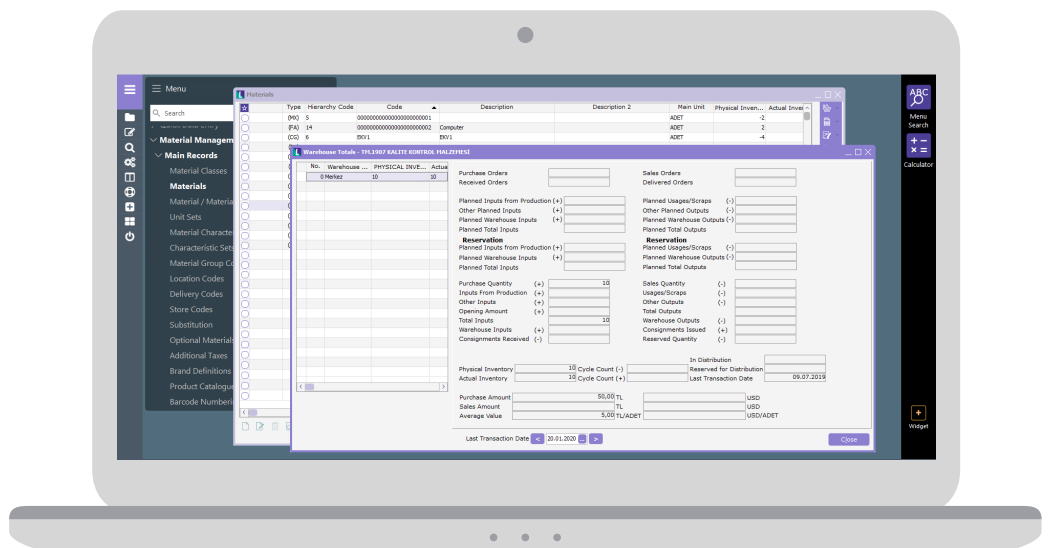


Choose the most profitable procurement method

The most important criterion in the procurement process is to select suppliers that offer both quality and reasonable price together. With the Logo Wings ERP product family, it is possible to evaluate the price quotations received from suppliers, compare them and make the decision to purchase quickly. After the supplier selection, time and cost savings can be achieved, as the approval mechanisms and processes associated with document flow are standardized.

Improve your stock operation quality

The stock control function allows you to create and monitor your stocks, targets and strategies, monitor your real-time stock values and levels and control your inventory costs. Products can be easily tracked thanks to material classification and leveled hierarchy designed for businesses working with various product ranges. The same type of materials can be monitored based on different criteria, and a change that concerns thousands of materials can be updated by changing only a single definition within its matrix interface. While materials can be tracked with an unlimited number of units, thanks to the monitoring feature with different units, reporting processes can be performed through a single unit with the conversion coefficients feature. With the definition of "dimension", dimensions of the material or stock boxes are recorded and the most suitable placement can be calculated according to this information both in the warehouse and during the logistics process.



Reasonable pricing, timely delivery

Processes such as pricing, quick quoting, shipment are critical for the customer satisfaction. The process, beginning with the creation of all the paperwork required for the orders and delivery, and lasting until the completion of a timely delivery can be managed in an integrated manner with the Logo Wings ERP solutions. The system also allows seamless issuance of invoices in foreign currencies, as well as in Turkish liras, and monitoring of foreign currency payments, thereby facilitating overseas operations and sales processes.

The convenience provided by Logo Wings ERP solutions starts with the product selection and pricing processes by the sales team. Your sales team, choosing the most suitable products for the customer among the alternatives that can be thousands of products sometimes, makes the most appropriate pricing quickly through the system. In order to support the management processes and help the sales team, customer information and business relations can be tracked on the customer debts tracking screen by dates. Special templates can be created for regular customers and offers can be prepared automatically.

With Logo Tiger Wings and Logo Tiger Wings Enterprise solutions, the most suitable campaign strategies for customers products can be easily determined and the data collected from these campaigns is analyzed with the results obtained to guide future campaigns.

The quality of service offered to customers increases as operations are managed properly and timely with an efficient sales and distribution process, and the improvement in customer satisfaction is reflected in your company as a competitive advantage.

Sales follow-up

Logo Wings ERP product family, including applications aimed at evaluating and improving the performance of the sales team, allow you to set sales targets based on the sales representatives and measure performance accordingly. It is also possible to determine a route through the system and create an effective distribution plan to organize the sales personnel's planned visits in the most effective and efficient way.



Cutting-edge technology

Logo Wings ERP solutions can be used with all internet browsers, regardless of operating systems. thanks to its desktop application or the HTML 5 layer. In other words, thanks to the web access and user interfaces designed for the tablet screens, and the support of the Virtual Keyboard, you can always access the ERP solutions at any time through mobile devices. This means continuous communication with customers, business partners, and suppliers at any moment.

You can create an ERP package tailored to your needs with its helpful and advanced functions such as efficient and effective management of internal processes, reducing errors in data processing and giving employees instant access to information in the decision-making process, as well as its optional module packages that can be purchased.



The Logo Solution Family as a whole

Many solutions in the Logo portfolio can be integrated into Wings ERP solutions quickly and smoothly. Logo Tiger Wings and Logo Tiger Wings Enterprise, which can work in an integrated way with human resources management, business analytics solutions, field sales management solutions, do not limit your corporate processes to resource planning only, these solutions also provide integrated management and increase your business efficiency.



Widgets and apps for those who want more

The widgets and apps provided to meet all the expectations of businesses using Logo Wings ERP solutions continue to support Logo's concept of "upgradeable products". In addition to the standard features included in the product, many functions or additional features can be downloaded as an app or widget with a single click. Current applications can be upgraded if needed with applications that can be integrated into the system through the app-in-app technology. Depending on the features of the application downloaded, these new features can also be used regardless of the platform.

The required information can be obtained quickly with the widgets allowing you to view the most frequently used processes on the right bar. You can easily add ready-to-use widgets and apps that are developed by Logo and its Solution Partners in line with your needs and expectations or that can be purchased from the Logo Store, to your desktop and access them with a single click.



Analyze at a glance with the manager console

The manager console provides a great advantage for the top management in order to see the whole picture and get instant information. The indicators in the console can be easily customized according to the manager's focus or changing expectations. For example, the best selling products, the most active customers, stock and accounts receivable turnover rates, cash and bank status can be controlled from a single panel. In addition to the instant status, summary information can also be obtained to shorten managers' decision-making processes, and this provides agility and flexibility.

User-friendly design

The determining factor in the interface designs is the user experience. The more comfortable the interfaces that connect the technology with the users are, the better the user experience and the adoption rate of solutions used. This is the basis of the new interfaces developed for Logo ERP solutions.



Supporting you from your first step

Logo is with you from the first moment you start using the ERP solution! With the first installation, we welcome you with a video that tells you what features you can access, which functions you can use, and how to use them. Clear, simple and effective, these video guides are at your service not only for the solutions but also for apps and other add-ins.



Your desktop is just the way you want it

The main screen can now be split into frequently used functions thanks to the “add new desktop” feature on the left bar and you can add new functions at any time easily. The functions added to the desktop can be grouped as a folder by dragging and dropping; thus, the interrelated functions are kept together to make the desktop more organized. Providing ease of use, saving time and ensuring productivity, this system appeals to your eyes with its aesthetic design, while increasing your work productivity.

Allowing you to customize shortcut keys to speed up your processes, ERP solutions allow you to make changes to your created shortcut commands. In short, all the features you need on your desktop are brought together in Logo Wings ERP Solutions.



Aesthetic and practical design

Background colors, page contrast, icon colors, and sizes are rearranged to create a more aesthetic and easy-to-read design. The background can be easily changed at any time, and the font color changes automatically to the selected background. This ensures optimal visual comfort on every background.



Stop getting lost among windows

The biggest challenge for users who have to constantly switch between multiple windows is to quickly recognize the right window and open the right page; for this reason, open windows in Logo Wings ERP Solutions are at the bottom of the screen with icons that can be easily seen.



The access tree is again on the homepage

It's possible to view all functions from a single point thanks to the access tree feature! Also, any function in the menu can be added to the desktop as a shortcut with a single click. When the mega menu in the access tree is used in the full screen mode, all menus and sub-menus in the solution can be viewed on one screen.



The easiest way to find something is: search

Her ne kadar istenen fonksiyonlar erişim ağacı üzerinden kolayca bulunabilse de "arama" butonunun daha görünür bir şekilde masaüstüne alınmasıyla, Logo Tiger Wings'de aradığınızı bulmak çok kolay.



Customized and module-independent forms

You can add new fields to the forms in Logo Wings ERP and you can easily search lists in these fields. This feature makes it possible to customize the forms developed with easy and fast visual adaptation for users without knowing a programming language. In addition, you can easily enter all your data into the forms created with Logo Tiger Wings ERP solutions using the wizard.

In addition, you can open the screens of different modules simultaneously and perform the relevant tasks. In this way, required information is obtained without closing the screen, regardless of the module.



Direct access to external links

While using your ERP solution, you do not need to logout from the system when you need a chart, document, application, folder, or website from a different source. In addition to frequently used Windows programs such as Excel, Word, PowerPoint, the shortcut of any external link can be added to the desktop and all applications can be accessed quickly from within the program.





Our integrated solution with Logo Tiger Wings ve Logo Tiger Wings Enterprise

Business analytics: Businesses are in need of transforming huge amounts of data that does not make sense on its own into significant information and therefore, value. Logo business analytics solutions process data from tens of different sources quickly and meticulously, and provides real-time information and reports to decision-making mechanisms. With the budget management solution, budget processes are managed faster, more flexibly and securely. Logo Business Analytics Solutions help you to stand out against the competition.

Human resources: Agile human resources processes increase the overall service quality of the business and the efficiency of human resources teams. With the HR Solutions provided by Logo, all HR processes are digitalized and add value to businesses. Payroll Solutions also allow for the error-free and fully compliant management with legal legislation of payroll processes of employees.

Field sales management: For businesses which carry out sales operations through field sales teams, the effective and efficient operation of these teams directly affects the profitability of the company. Developed for this purpose, Logo Mobile Sales Field Sales Management solution enables companies to manage customer demands and sales operations in the best way possible. Thanks to the solution's real-time customized reporting capability, sales teams are able to create reports and share them with customers during meetings, and therefore are able to guide sales decisions more accurately. Also providing coordination between the warehouse and the sales teams, the solution allows for healthier processes carried out on the basis of real-time stock information. At the time of sale, invoices can be printed from anywhere, at any time via printers with a Bluetooth connection. In addition to all this, the costs of the field sales operations are also reduced thanks to advantages such as the ability to plan the routes of the sales teams at the center and the ability to effectively track vehicles.

Customazation tools: These are the tools offered by Logo Yazılım to its Logo solution development partners to bring new capabilities to the product. Integration support is provided to solution development business partners by the Logo technical team to bring new capabilities to the product, with integration tools training organized by Logo Academy, and internal use test sets provided free of charge.

Logo approved ecosystem solutions: Logo-approved ecosystem solutions," which can be fully integrated with Logo ERP solutions and developed by Logo's solution development partners, offer solutions for the special needs of users. These solutions are Solutions licensed by Logo and sold through Logo price lists.

Data backup, cafe and restaurant management, data transfer between companies, warehouse processes management, technical service, e-commerce and marketplace integration within the scope of Logo-approved ecosystem solutions that diversify according to the specific needs of businesses and make a difference in digital transformation with increased efficiency and time savings in business processes, Many different solutions are offered, such as document management, fuel stations and retail sales areas.

Logoapps: Authorized business partners who have completed the necessary training and certification processes in Logo's wide ecosystem and can integrate into Logo solutions using adaptation tools are classified as Logo solution development business partners. These business partners can publish their products, which integrate with Logo ERP products and provide solutions to the special needs of users with the assurance of Logo, on the <http://store.logo.com.tr/logo-apps> site, after the examination of the Logo technical team. These solutions are also positioned as Logo apps.



For further
information about
Logo Tiger Wings Enterprise

For further
information about
Logo Tiger Wings



The most valuable IT brand of Turkey



Ecosystem of 5000+ people	800+ Business partners	150.000+ Active customers	1.300+ Employees
---------------------------	------------------------	---------------------------	------------------

Logo is coding the future together with its customers, business partners, employees, investors, and all stakeholders as a company contributing to the sustainable success of its customers. Logo creates value with its customers with passion and agility.

Turkey's largest public software company and the largest local enterprise software company, Logo continues its activities as one of the leading companies in the industry since its foundation in 1984. Logo offers application software solutions to enterprises ranging in size from micro to large corporations. The company, by increasing innovation and creativity in its products and services, lays the foundation for sustainable success by accompanying many companies from 44 countries on their journey of growth, with more than 1,300 employees in 4 different countries at 7 different locations and 800 business partners. Logo is a software company competing at the global level with investments in Romania and India. With Logo Total Soft, the subsidiary in Romania, the company aims to expand its footprint in the domestic market in Romania and in the European market. With its investment in India, Logo carries out product development, promotion, and marketing activities in the Indian market.

In addition to Enterprise Resource Planning, Logo's offering comprises many complementary solutions such as Customer Relationship Management, Human Resources Management, Workflow Management, Warehouse Management Systems, Business Analytics Solutions, Retail Solutions, and e-Government

solutions. It also provides digital transformation consultancy and special project management services. As the leader of the ERP systems in terms of number of customers for many years, Logo boasts a large and robust ecosystem that extends from business partners to Logo users, and from academics to students and industry professionals. Logo pursues its vision to code Turkey's future together thanks to the power it derives from this ecosystem. Logo believes in the dreams of its customers, shares the same goals, and works diligently towards achieving them.

Since its establishment, Logo has become the innovative leader of the industry thanks to its innovative products, services and business processes, and the added value it creates in digital transformation. Logo has invested in different businesses and technologies and has witnessed many breakthroughs and revenue growth in recent years due to organic and inorganic growth. The company has always adopted a fair and transparent management approach and currently has a free- float rate of 66%. Also, Logo is the first IT company to go public in Turkey and the IPO was in 2000.

After a series of strategic investments aiming at transferring the know-how and experience gained in the Turkish market to abroad, it continues the path towards becoming a regional player as one of the industry's leading companies. Logo has been pursuing its firm growth with 38% revenue CAGR (compound annual growth rate) in the last 10 years.



Logo solutions:



Offers high performance



Offer an affordable total cost of ownership



Provides an open platform



Quickly installed



Upgradeable functions in line sector-specific needs



Creates a synergy with common solutions and platforms

Find the closest business partner...



logo

